



CONTEMPORARY LUXURY DUPLEX FOR SALE IN LAS COLINAS DE MARBELLA, BENAHAIVIS BENAHAIVIS LUXURY DUPLEX

📍 Benahavis

REF# BEMA1466 €1,350,000

BEDS

3

BATHS

3

BUILT

269 m²

TERRACE

87 m²

Rising above the valley with uninterrupted views of the Mediterranean, this contemporary luxury duplex for sale in Las Colinas de Marbella, Benahavis sets a new benchmark for design-led living. Conceived by a renowned design studio and recently refined to show flat calibre, this residence unites bold modern form with precision detailing rarely seen in private homes. Every line is deliberate, every proportion exact, and every space reveals the panorama of sea, mountains, and valley beyond.

The ground floor features a striking open-plan layout where living, dining, and kitchen spaces converge with purpose and clarity. Expansive windows draw in the views, flooding the interiors with light and directing attention toward the terraces. Each area feels deliberate and defined, yet interconnected, creating spaces that are as dynamic for entertaining as they are for quiet, contemplative moments. The kitchen exudes ultra-sleek sophistication, with sculptural cabinetry, premium appliances, and a minimalist aesthetic that turns

+34 952 939 460 · info@bromleyestatesmarbella.com Urbanizacion El Rosario, CN340, Km 188, Marbella, Malaga 29603

BROMLEY ESTATES

Marbella

cooking into a design statement. Terraces extend directly from the living areas, creating outdoor zones for dining, an open-air kitchen, and a built-in barbecue, with uninterrupted valley and sea views.

Upstairs, three en-suite bedrooms offer private retreats, each with terraces that bathe in the changing light over the Costa del Sol. The principal suite commands the best vantage point, featuring a spacious terrace and interiors that balance calm luxury with meticulous design. Each bathroom and bedroom has been carefully designed to emphasize comfort, light, and proportion, turning everyday living into a considered experience.

Beyond the home itself, communal gardens and a large pool create a sense of calm seclusion, while gated access and 24-hour security ensure peace of mind. The location provides tranquillity and convenience: within minutes, residents reach fine dining in Benahavis village, championship golf at nearby courses, and the golden beaches of San Pedro and Estepona. Designer shopping, vibrant nightlife, and international schools are easily accessible, while walking and cycling trails through the surrounding hills invite daily escape into nature. This hillside setting places the home at the heart of one of the Costa del Sol's most desirable areas, making it a standout duplex for discerning buyers.

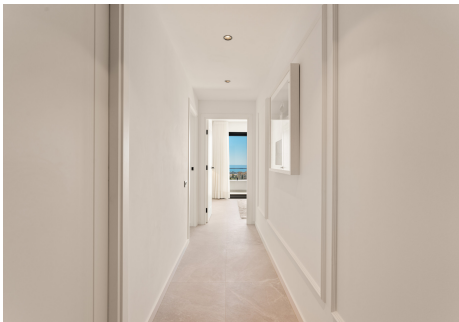
This luxury duplex is an expression of style, craftsmanship, and lifestyle. Every detail, from the refined finishes to the broad terraces and open views, reflects a home designed for those who value both architecture and the lifestyle of Benahavis.



+34 952 939 460 • info@bromleyestatesmarbella.com • Urbanización El Rosario, CN340, Km 188, Marbella, Malaga 29603

BROMLEY ESTATES

Marbella



BROMLEY ESTATES

Marbella

