



## GROUND FLOOR APARTMENT FOR SALE WITH STUNNING VIEWS IN BENAHAVIS

📍 Benahavis

REF# BEMA1469 €400,000

BEDS

2

BATHS

2

BUILT

91 m<sup>2</sup>

TERRACE

39 m<sup>2</sup>

This ground floor apartment for sale with stunning views in Benahavis brings together generous space, light, and views in a single, striking package. Designed to suit a variety of lifestyles with ease, it works perfectly as a permanent residence, a weekend retreat, or a high-yield holiday rental. The secure gated community and tranquil setting provide peace of mind while keeping shops, restaurants, golf courses, and San Pedro town centre just moments away.

Featuring two elegantly presented bedrooms and two bathrooms, the apartment opens onto a thirty-nine square metre terrace overlooking the communal pool and gardens, with uninterrupted sea and mountain views that shift with the changing light. The fully fitted kitchen, marble floors, air conditioning, and updated electrics create a modern, practical home perfect for full-time living or generating seasonal returns.

South-west facing, it fills with natural light from morning through evening, and stepping straight out to the communal pool and gardens brings both ease and a sense of living close to nature. The terrace is

+34 952 939 460 · [info@bromleyestatesmarbella.com](mailto:info@bromleyestatesmarbella.com) Urbanizacion El Rosario, CN340, Km 188, Marbella, Malaga 29603

# BROMLEY ESTATES

## *Marbella*

generously sized, with a section fitted with awnings to provide shade and help moderate indoor temperatures as needed. It offers plenty of room for dining, relaxing, or entertaining guests, while enjoying uninterrupted views of the surroundings.

The apartment is perfectly positioned to enjoy the best of both coastal and inland life. Benahavis, just a short drive away, is renowned for its traditional charm, excellent restaurants, and relaxed village atmosphere. The local area offers a wealth of outdoor activities, from championship golf courses to scenic walking and cycling routes through the hills and forests.

Coastal resorts such as Marbella, Puerto Banus, and Estepona are easily reached within 15 to 25 minutes, offering beaches, shopping, and nightlife, while quiet inland villages reveal a more authentic Andalusian experience along winding country roads. Malaga and Gibraltar airports are both within approximately an hour's drive, making travel convenient for residents and holiday visitors alike.

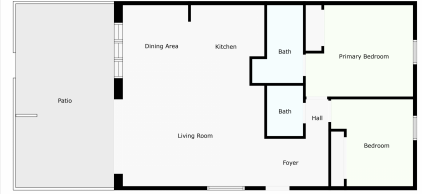
The combination of tranquil natural surroundings in Benahavis and easy access to key destinations makes this location highly versatile for permanent living, holiday stays, or rental investment.





# BROMLEY ESTATES

## *Marbella*



For Information Please Call

