

BROMLEY ESTATES

Marbella



BEACHFRONT DUPLEX APARTMENT FOR SALE IN MARBELLA WITH PANORAMIC SEA VIEWS

📍 Marbella

REF# BEMA1543 €1,150,000

BEDS

3

BATHS

3

BUILT

167 m²

Few properties can rival the position of this beachfront duplex apartment for sale in Marbella with panoramic sea views. Set within a highly sought-after frontline community, it combines expansive terraces and direct access to the shoreline in a setting that is difficult to replicate.

Set across two levels, the duplex offers spacious accommodation and generous outdoor areas. The main living area opens directly onto a large terrace overlooking the community gardens, swimming pool and Mediterranean beyond, creating a natural extension of the interior. Whether used for dining, entertaining or simply spending time outdoors, this area immediately draws attention to the property's exceptional outlook.

The living and dining areas are bright and generously proportioned, while marble flooring throughout enhances the sense of continuity and space. The fully fitted open-plan kitchen offers a modern design, ample storage, quality appliances and practical workspace for everyday living. The property offers three bedrooms and three bathrooms, including a principal suite with en-suite bathroom and its own private

+34 952 939 460 · info@bromleyestatesmarbella.com Urbanizacion El Rosario, CN340, Km 188, Marbella, Malaga 29603

BROMLEY ESTATES

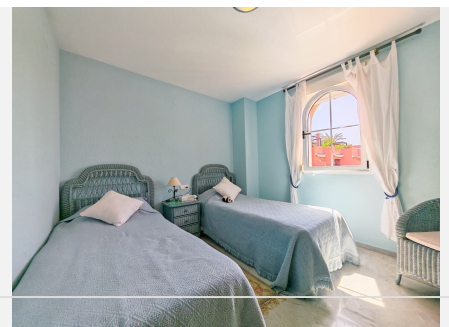
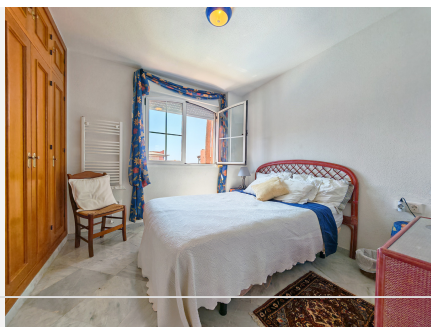
Marbella

balcony. The distribution of the bedrooms provides a greater sense of comfort and independence for family members and visiting guests alike.

Residents enjoy access to beautifully maintained gardens, a large swimming pool, tennis and paddle facilities, together with 24-hour security and concierge service. The mature landscaping, distinctive architecture and direct beach access create an environment with a character and authenticity that has become increasingly difficult to find along the coast.

Despite its peaceful beachfront position, the duplex remains exceptionally well connected. Beach clubs, restaurants, shops, golf courses and everyday amenities are all nearby, while Marbella town centre, Puerto Banus and several international schools can be reached within minutes. Malaga Airport is approximately 35 minutes away, providing convenient access for both regular travel and longer stays on the Costa del Sol.

Opportunities to acquire a genuine frontline beach property with uninterrupted Mediterranean views have become increasingly limited, especially within communities that retain the character, privacy and direct beach access that buyers value most. This is a standout property in a location that continues to define the very best of Marbella beachfront living..



+34 952 939 460 · info@bromleyestatesmarbella.com Urbanizacion El Rosario, CN340, Km 188, Marbella, Malaga 29603

BROMLEY ESTATES

Marbella

