



## STATE OF THE ART VILLA IN BENAHAVIS

📍 Benahavis

REF# BEMD1353 €1,990,000

BEDS

4

BATHS

3

BUILT

602 m<sup>2</sup>

PLOT

515 m<sup>2</sup>

TERRACE

239 m<sup>2</sup>

Surrounded by some of the best golf courses on the Costa del Sol, such as Atalaya Golf & Country Club, Paraiso Golf, Guadalmina and Los Arqueros, this state of the art villa in Benahavis is the perfect setting for you to soak up nature and the very essence of the Mediterranean. Beautiful Benahavis is located in the hills above Marbella and Puerto Banus and offers an air of seclusion and privacy compared to its lively neighbours and is just 7 kms from the coast. Benahavis is a beautiful natural region well-known for its prestigious dining, high end properties and golf courses, with the luxury marina of Puerto Banus less than ten minutes away.

The concept behind this state of the art villa in Benahavis was to create sustainable homes that are at one with nature. A return to the organic and ecological way of life, where residents can enjoy their own vegetable garden and grow natural produce, advised and guided by expert farmers. There are just thirteen exceptional villas within this select development.

# BROMLEY ESTATES

## *Marbella*

Set over 4 levels, this state of the art villa in Benahavis boasts an open plan layout synonymous with Mediterranean living, where different relaxation zones and an open plan kitchen are the feature of the main level. Here the indoor and outdoor space merge seamlessly with a covered terrace shading you from the sun. It is an area to dine alfresco and watch your family have fun in the pool. There are also steps down to your private garden.

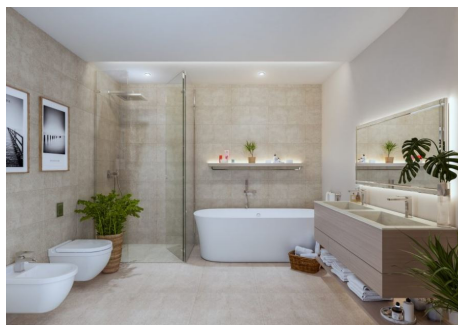
There are four bedrooms and three bathrooms within this state of the art villa in Benahavis, each with the elegant features you'd expect from a property of this calibre. There are options to add: a lift; exterior Jacuzzi; fireplace in the living room. Furthermore, the basement offers more options to suit your lifestyle. The developer can turn the basement into: a cinema room; a games room; a spa with Jacuzzi, sauna and showers or a self-contained bedroom, living room and kitchen for guests, staff or teenagers.

Within the development there is more than 5,000 m<sup>2</sup> of landscaped spaces with gardens and orchards, swimming pools and pergolas. It's a natural oasis surrounded by woodland, fruit trees and flowers, yet just a stone's throw from cosmopolitan towns with all the services they provide.

A feast for the senses, this state of the art villa in Benahavis encourages you to enjoy the simple pleasures of living the luxury of life in a place where luxury lifestyle is easily achievable. Contact us today for more information on this unique concept development.

Prices from 1,290,000 to 1,650,00 Euros

Prices from 1,290,000 to 1,650,00 Euros





# BROMLEY ESTATES

## *Marbella*

