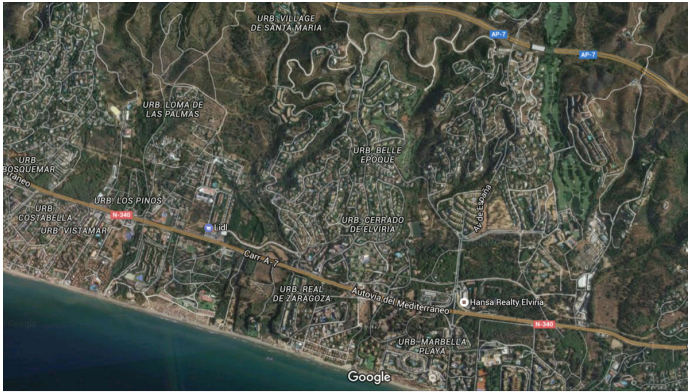


BROMLEY ESTATES

Marbella



RESIDENTIAL PLOT BEDROOMS BATHROOMS IN ELVIRIA

📍 Elviria

REF# BEMR3412162 €6,690,000

BEDS

BATHS

BUILT

PLOT

m²

28123 m²

19 PLOTS – ELVIRIA – EAST MARBELLA

FLEXIBLE PLAN: The company who own the land have a plan to purchase 5 plots, then option for another 5 plots and so on.

This is a residential area of luxury villas, located in the heart of the Costa del Sol, 9 Km from the centre of Marbella and 35 minutes from the International Airport from Malaga.

In total there are 19 plots available which correspond to the numbers 99-100-101-102-103-104-105-106-107-108-109-110-111-112-115-116-117-118-119, surrounded by a large number of native trees with magnificent views of the sea from the plots. SSE orientation.

By car: 2 mins to Amenities – 35 mins to Malaga airport – 10 mins to Marbella town centre – 15 mins to Puerto Banus – 5 mins to Beach

BROMLEY ESTATES

Marbella

