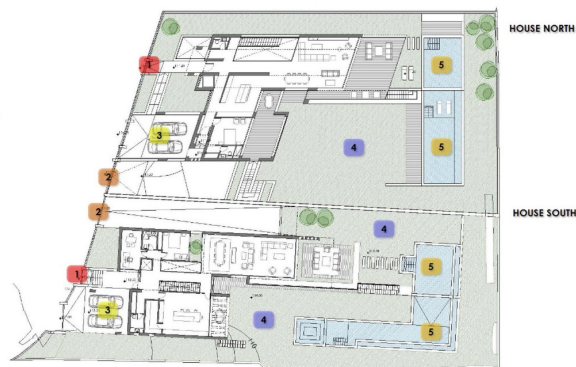




PLOT

- 1 MAIN ACCESS
- 2 PARKING ACCESS
- 3 OPEN PARKING
- 4 GARDEN
- 5 SWIMMING POOL



RESIDENTIAL PLOT BEDROOMS BATHROOMS IN EL ROSARIO

📍 El Rosario

REF# R3501808 €1,300,000

BEDS

BATHS

BUILT

m²

PLOT

2400 m²

SEA VIEW DEVELOPMENT OPPORTUNITY! Two adjoining development plots of 1200m² each with panoramic sea views. Full project included with architects plans and planning permission approved to build two contemporary sea view villas (estimated resale value of €2.9M each based upon high spec finish). A prime site for development of 2 new sea view villas in El Rosario.

BROMLEY ESTATES

Marbella

