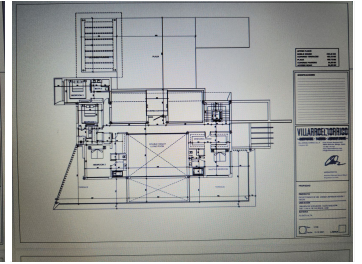
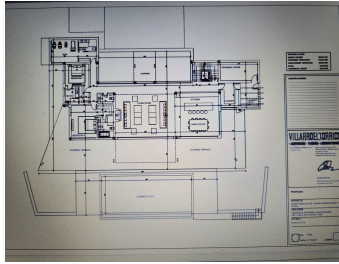
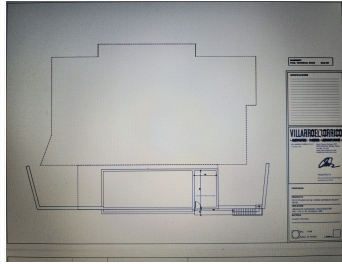
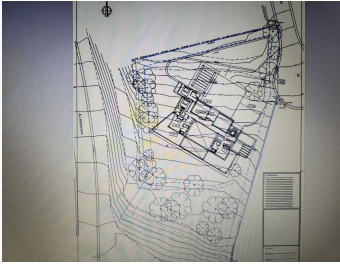
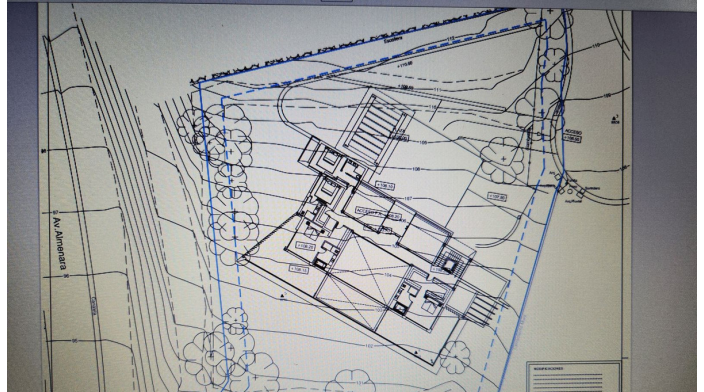


BROMLEY ESTATES

Marbella



RESIDENTIAL PLOT BEDROOMS BATHROOMS IN SOTOGRANDE ALTO

📍 Sotogrande Alto

REF# BEMR4223650 €650,000

BEDS

BATHS

BUILT

m²

PLOT

3586 m²

We offer this impressive plot in the countryside of Gibraltar, specifically in Sotogrande. Fantastic panoramic views thanks to its unbeatable location.

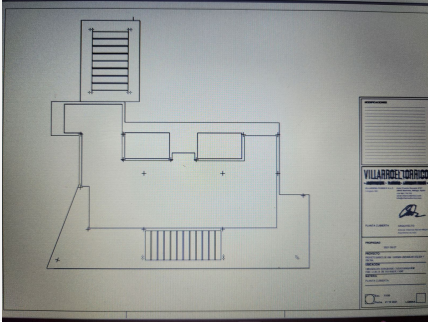
All supplies enabled, paved road, sewerage, sidewalks, public lighting and easy access to the highway. Sotogrande International School at 900m.

It is a land with 3586 Sq m with a project already developed and on plans of a spectacular villa with 6 bedrooms, 6 bathrooms, living room, dining room, kitchen, garage, garden, swimming pool. This villa would consist of 622 useful Sq m, distributed over 2 floors plus a basement. Estimated construction time 2 years. Construction license, topographic and geological plans.

Call us if you want to know more about this proposal and we will inform you in detail. Possibility of acquiring an independent plot of the project. (Only plot €650,000. With project €4,200,000)

BROMLEY ESTATES

Marbella



BROMLEY ESTATES

Marbella

