

BROMLEY ESTATES

Marbella



TOWNHOUSE 3 BEDROOMS 4 BATHROOMS IN NUEVA ANDALUCIA

📍 Nueva Andalucia

REF# BEMR4242037 €550,000

BEDS

3

BATHS

4

BUILT

156 m²

TERRACE

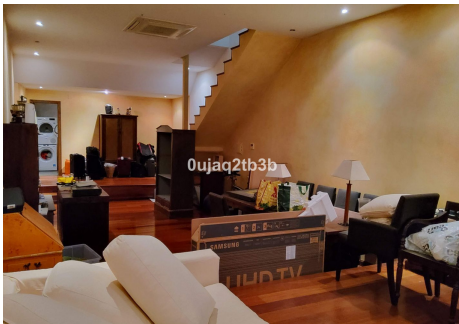
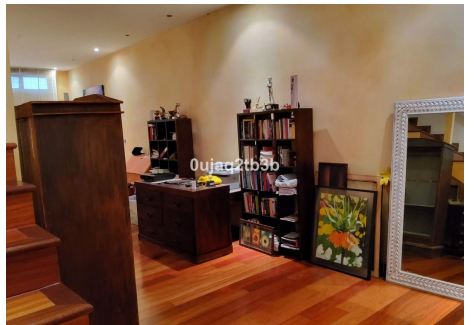
8 m²

Located in the heart of the Golf Valley in the sought-after complex of Aloha Pueblo, this East facing cute townhouse is a perfect golfer's hideaway. Surrounded by the renowned golf courses of Aloha, Los Naranjos, Las Brisas and La Quinta. This three stories house offers two en-suite bedrooms with ample walk-in closets in the higher level; Open plan kitchen perfect to entertain, living room with access to a terrace with beautiful views and guest toilet in the main floor; open plan large basement fully operational with a large full bath and laundry room. High specs include electric blinds, hot cold A/C, broadband internet connection and full kitchen.

Aloha Pueblo offers 24-7 security and CCTV system, bars and restaurants. Walking distance to Aloha Gardens where you find more services and amenities and just a short drive to Puerto Banus. Very well maintained complex with high standards and heated pool.

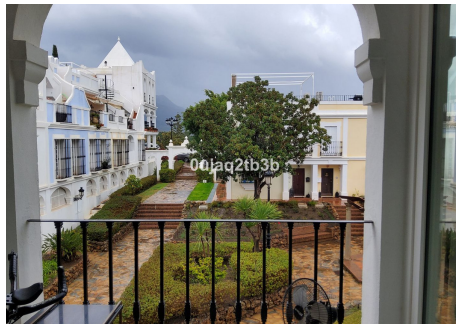
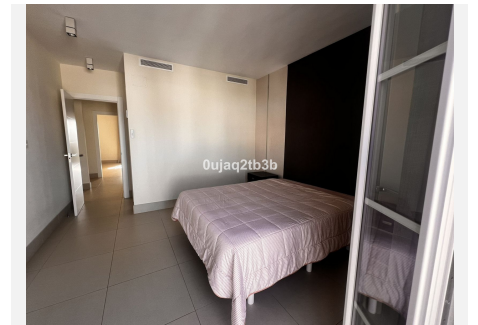
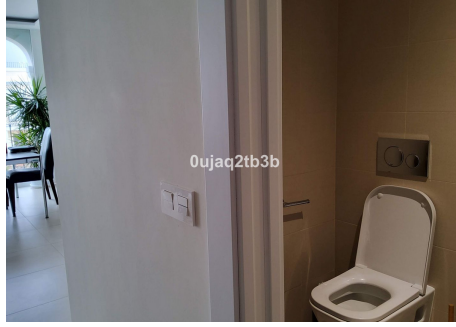
BROMLEY ESTATES

Marbella



BROMLEY ESTATES

Marbella



BROMLEY ESTATES

Marbella

