



MIDDLE FLOOR APARTMENT 3 BEDROOMS 2 BATHROOMS IN BENAHAVIS

📍 Benahavis

REF# BEMR4245814 €945,000

BEDS

3

BATHS

2

BUILT

135 m²

TERRACE

44 m²

Recently built, beautiful and very spacious south-southwest oriented apartment in Block 9 in Olivos, Real de la Quinta, Benahavis with views of the sea and the mountains around and where you can enjoy the sun, the sea and the nature is a reality.

(Total built area of 135.35 m², useful area of 122.00 m² and terrace of 44 m²)

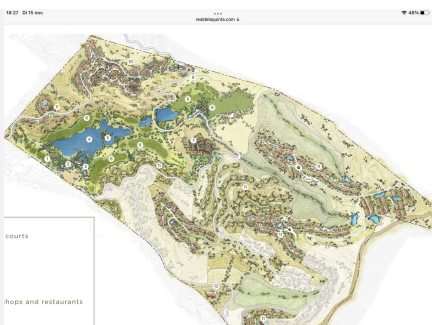
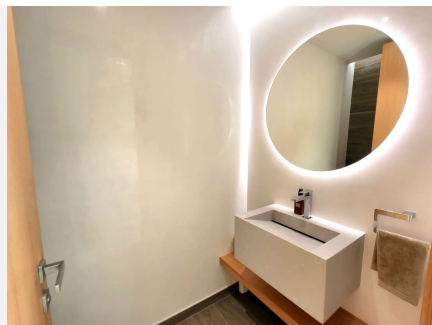
- Large terrace, designed to be enjoyed all year round with covered areas: side sun in the morning to frontal sunset in the evening.
- Maximum passage to the terrace through sliding windows that slide completely into the wall.
- A fully equipped kitchen, home automation system, electric shutters, separate laundry room with washing machine and dryer.
- Underfloor heating and air conditioning everywhere with which you can cool and heat.
- This apartment has 3 bedrooms, 2 bathrooms and a guest toilet and has currently been converted into a 2-bedroom apartment.

+34 952 939 460 · info@bromleyestatesmarbella.com Urbanizacion El Rosario, CN340, Km 188, Marbella, Malaga 29603

BROMLEY ESTATES

Marbella

- However, there are 3 options in terms of future layout:
 - Retain 2 bedrooms with a large, very open living room as in the current layout.
 - Keep 2 bedrooms with a large living room and add a sofa bed if necessary.
 - Create a 3-bedroom apartment by simply replacing a dividing wall with door.
- 2 parking spaces and a large storage room in the underground garage included.
- Communal swimming pool and closed apartment block.
- Apartment for sale furnished (at €50,000) as well as unfurnished.
- Keys in the office and easy viewings.

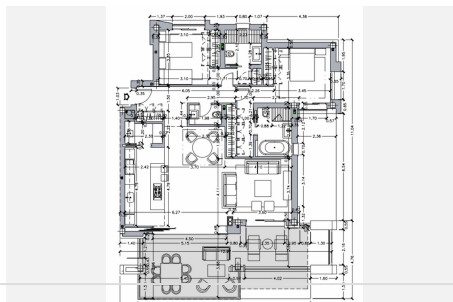
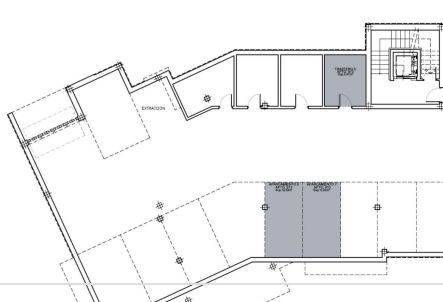
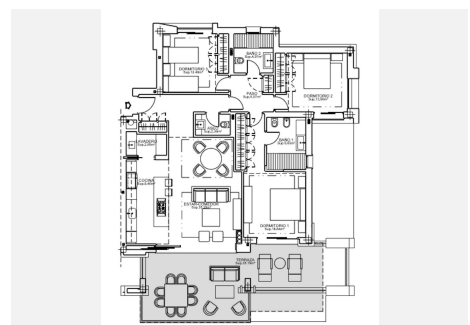


Bloque 9. Vivienda 913 (3D)

Total superficie construida	135.35m ²
Total superficie útil *	
Total superficie construida + comunes	154.16m ²
Total superficie terraza cubierta	38.35m ²
Total superficie terraza abierta	5.88m ²
Total superficie terrazas	44.23m ²
Total superficie jardín	0.00m ²

* Superficie útil según decreto 218 / 2005

La superficie mostrada en el plano corresponde a superficie útil



+34 952 939 460 · info@bromleyestatesmarbella.com Urbanización El Rosario, CN340, Km 188, Marbella, Málaga 29603