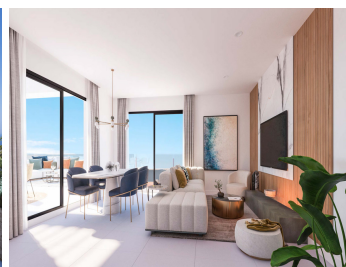


BROMLEY ESTATES

Marbella



TOWNHOUSE 3 BEDROOMS 2 BATHROOMS IN BENALMADENA

📍 Benalmadena

REF# BEMR4252744 €829,000

BEDS

3

BATHS

2

BUILT

164 m²

PLOT

72 m²

TERRACE

49 m²

New Development: Prices from €829,000 to €829,000. .

This development is an exclusive private development located in a privileged location in Benalmádena. Thanks to its elevated location, all homes will enjoy incredible panoramic views of the sea and the coast. The terraced layout of this development overlooking the Mediterranean Sea means that each and every one of the 49 apartments and 2 townhouses enjoys bright rooms thanks to natural light.

BROMLEY ESTATES

Marbella

