



## MIDDLE FLOOR APARTMENT 2 BEDROOMS 2 BATHROOMS IN BENAHAVIS

📍 Benahavis

REF# R4254187 €575,000

BEDS

2

BATHS

2

BUILT

102 m²

TERRACE

28 m²

5\* Luxury and contemporary middle floor apartment. The avant-garde architecture is designed by the famous architects Villarroel – Torrico @ Puente Romano Marbella. The setting is unique and just in front of Atalaya Golf ( 36 holes ) with unobstructed panoramic south orientated views, overlooking the golf courses, garden and parties sea view. Atalaya driving range is literally at your doorstep. The quiet and front golf location is unbeatable. Situated at the end of a cull the sack ( Atalaya Golf course and driving range ) between all-new luxury contemporary villa's in the exclusive secured urbanisation of La Alqueria – Benahavis, 6 minutes to Puerto Banus, 10 minutes to Marbella, 12 minutes to Estepona, 2 minutes to a very nice "Mercadona" supermarket and International School & College.

The master bedroom has a wardrobe and bathroom with Porcelanosa design and massage bath. The living room have high ceilings and large sliding doors with to the terrace. The thermic and sound insulation is of very good standards.

# BROMLEY ESTATES

*Marbella*

Atalaya Hills consist of 66 luxury apartments nestled in a state of the art landscaped "lavender, jasmine and dame de noche scented" gardens. It offers a large pool with "Chiringuito" bar and lounge area with self-serviced fridges and wifi. The professional Gym is completely designed by Technogym. SPA with sauna, hammam and shower area. The area is secured by Malaca patrol and has camera control.

Middle Floor Apartment, Atalaya, Costa del Sol. Middle Floor Apartment, Benahavís, Costa del Sol.

2 Bedrooms, 2 Bathrooms, Built 102 m<sup>2</sup>, Terrace 28 m<sup>2</sup>.

Setting : Frontline Golf, Close To Golf, Urbanisation.

Orientation : South.

Condition : Excellent.

Pool : Communal.

Climate Control : Air Conditioning, Hot A/C, Cold A/C, U/F/H Bathrooms.

Views : Golf, Panoramic, Garden, Pool.

Features : Covered Terrace, Lift, Fitted Wardrobes, Gym, Sauna, Storage Room, Ensuite Bathroom, Double Glazing, Fiber Optic.

Furniture : Optional.

Kitchen : Fully Fitted.

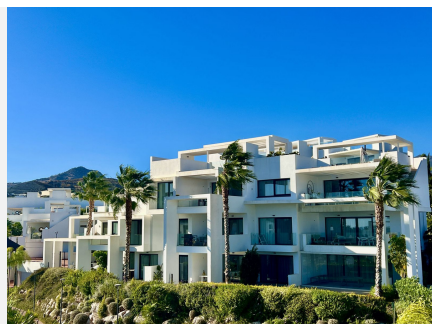
Garden : Communal.

Security : Gated Complex.

Parking : Underground.

Utilities : Electricity, Drinkable Water.

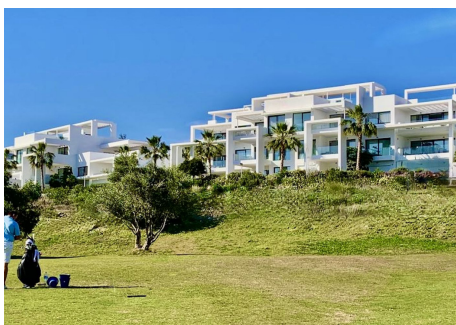
Category : Golf, Holiday Homes, Investment, Contemporary.





# BROMLEY ESTATES

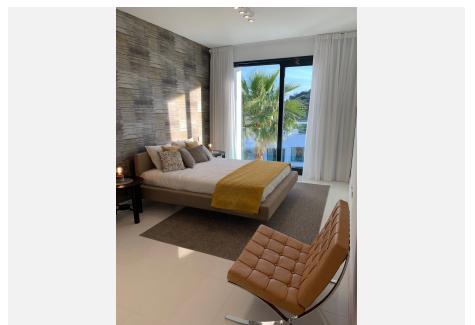
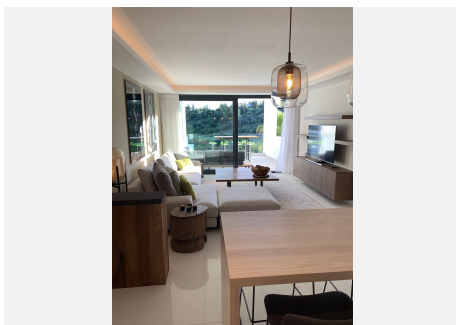
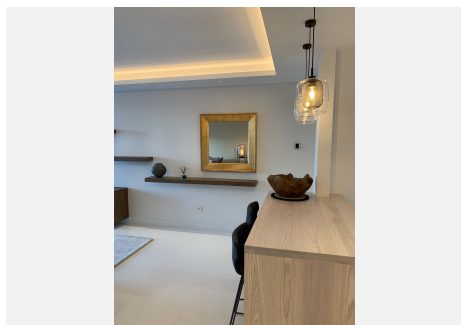
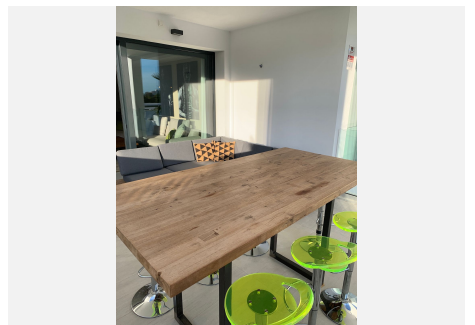
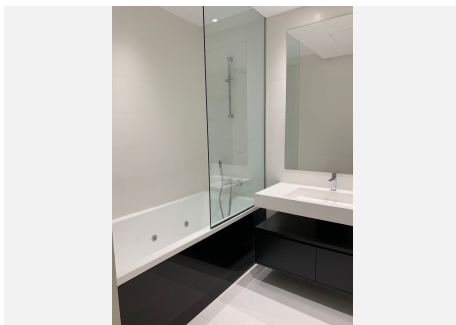
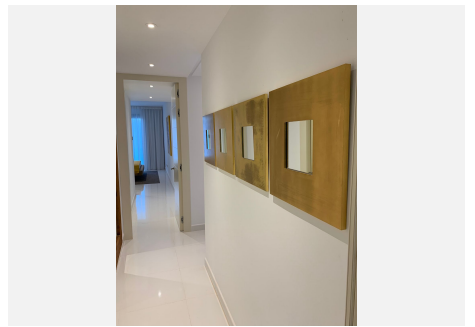
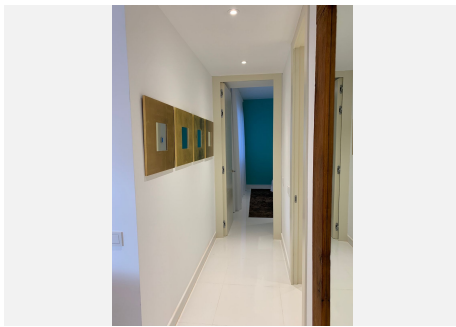
## *Marbella*





# BROMLEY ESTATES

## *Marbella*





# BROMLEY ESTATES

## *Marbella*

---

