



MIDDLE FLOOR APARTMENT 4 BEDROOMS 3 BATHROOMS IN LOS ALAMOS

📍 Los Alamos

REF# BEMR4265758 €1,870,000

BEDS	BATHS	BUILT	PLOT	TERRACE
4	3	245 m ²	270 m ²	30 m ²

Casa Palm is a fantastic 305m2 property located in the Puertochico urbanization, in the sought-after neighborhood of Los Álamos, Torremolinos. It was designed by the same architect as the San Carlos and San Luis Castles, so its striking architectural design is reminiscent of the style so typical of its predecessors. Puertochico has 93 extensive homes made with the best materials and finishes, with gardens of lush exotic plants that intoxicate us with peace. The complex is a closed area with a security checkpoint, providing greater peace of mind to its neighbors.

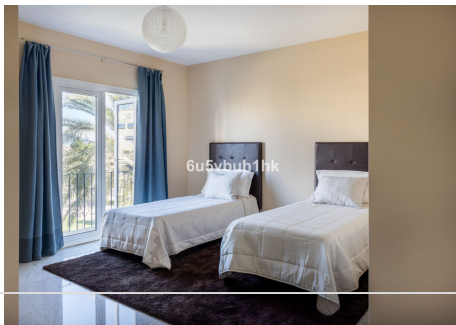
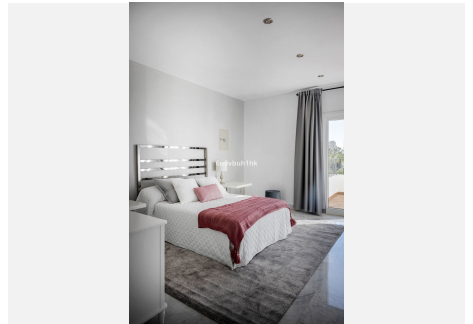
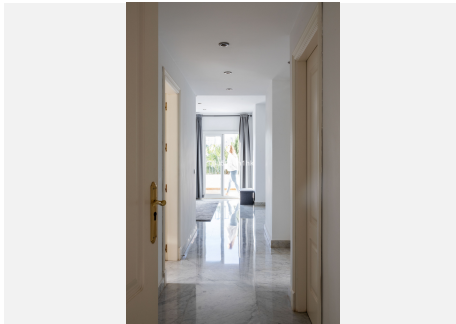
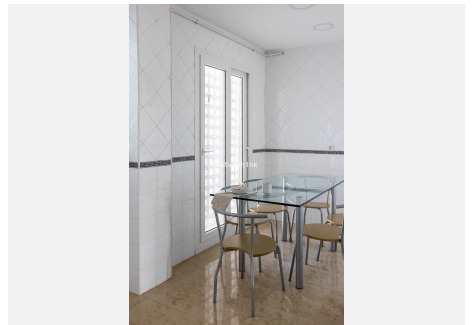
Its excellent location places it just a two-minute walk from the beach, close to restaurants, shops, supermarkets, a taxi rank, a bus stop and the commuter train. This area has a pet park, outdoor space for outdoor sports, very close to the access to the highway, the Plaza Mayor shopping center and just 5 minutes from the airport and 15 minutes from Malaga city.

BROMLEY ESTATES

Marbella

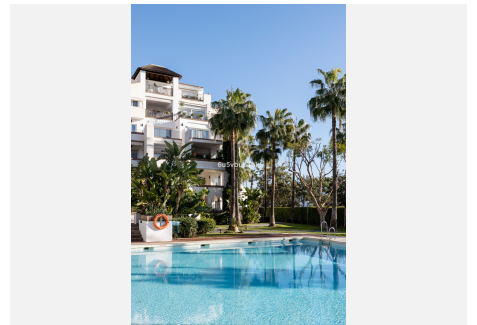
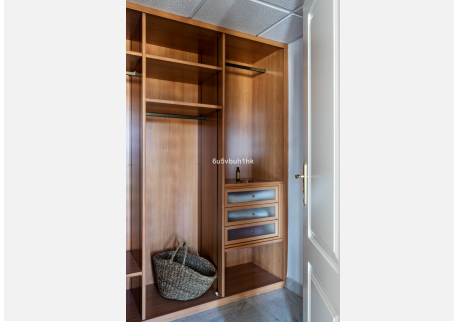
It is oriented mainly to the south and has 270 m2 of totally exterior housing in each and every one of its rooms. It is located on the third floor of a building distributed in three spacious and complete bedrooms with a dressing room and a Mediterranean-style en-suite bathroom. It has a large rectangular living room that includes two rooms: the meeting area and the relaxation area, with large French doors that give us access to the main 30m2 terrace with panoramic views of the sea. It also has a good-sized kitchen that makes it very comfortable and also has a spacious laundry room.

It has three parking spaces, one of which can fit two cars and two large storage rooms included in the price.



BROMLEY ESTATES

Marbella



BROMLEY ESTATES

Marbella

