



## PENTHOUSE 3 BEDROOMS 2 BATHROOMS IN BENALMADENA

📍 Benalmadena

REF# BEMR4313536 €1,395,000

BEDS

3

BATHS

2

BUILT

159 m<sup>2</sup>

TERRACE

51 m<sup>2</sup>

Luxurious penthouse (duplex) – Panoramic view

Live your dreams in this luxurious 3 bed duplex penthouse in one of the most sought-after new developments on the coast. This duplex penthouse is for the buyer that wants it all!

Best location just outside of Benalmádena Pueblo with an absolutely unobstructed panoramic sea view overlooking the full coast line including Fuengirola Bay. It's magic here – not just during the day but also at night time with the warmth glancing colored lights from Fuengirola city and surrounding areas.

This large duplex penthouse is south facing and offers two large private terraces with plenty of space for socializing with friends and family in the outdoor lounge area, dining- and BBQ area or from the chill out area with daybeds, from where you can enjoy the sun all day long.

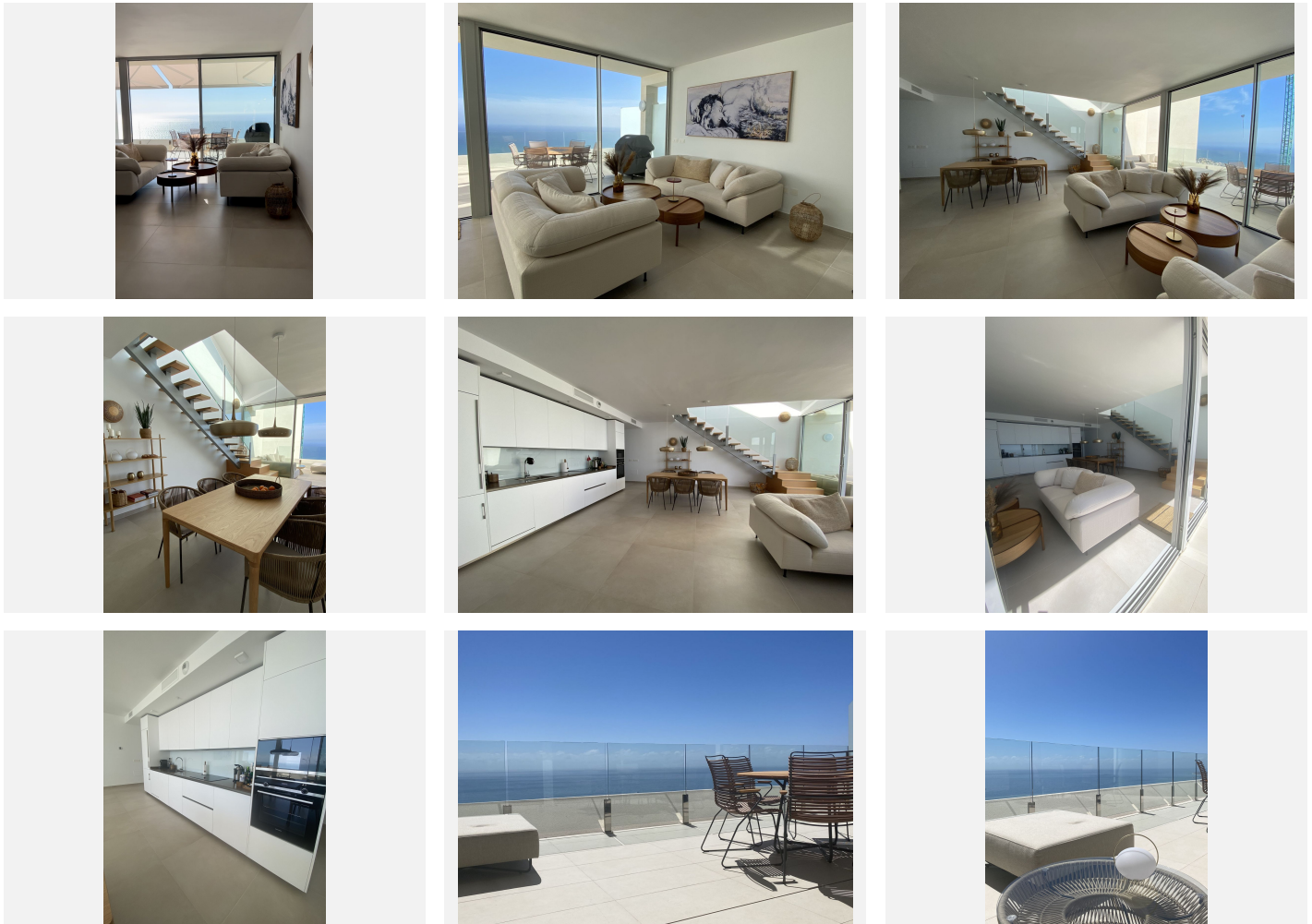
# BROMLEY ESTATES

*Marbella.*

The penthouse consists of entrance and hallway and 2 large guest bedrooms with built-in wardrobes and electric blinds leading. From the guest bedrooms you enter out to a hallway with guest bathroom and a open plan kitchen and living room with floor to ceiling sliding windows that leads out to the large downstairs terrace. Upstairs you get large master bedroom (hotel lux suite feeling like...) with built-in-wardrobe/walk-in. The master bedroom is – on the one side – leading to a private terrace and the other side to lovely and large master bathroom.

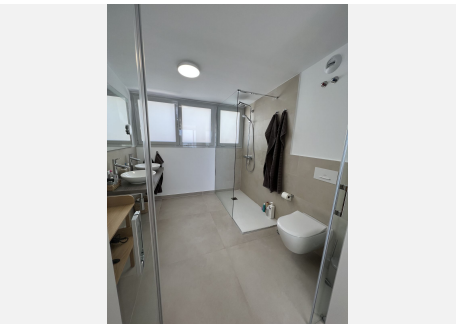
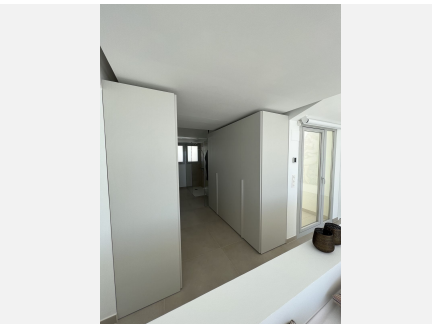
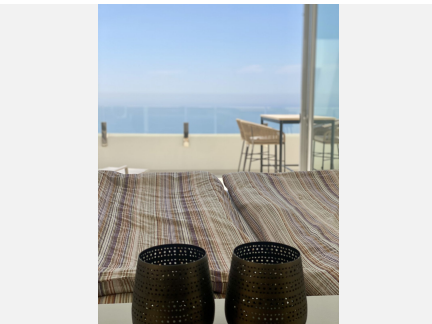
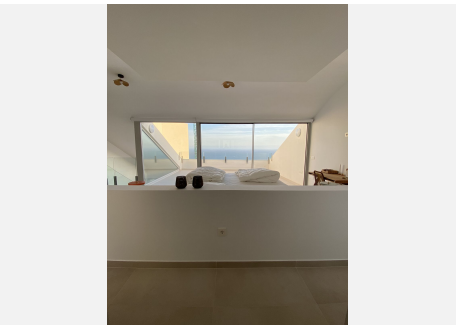
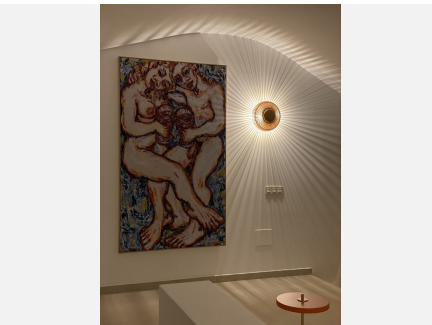
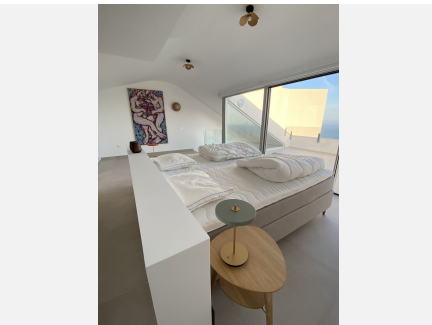
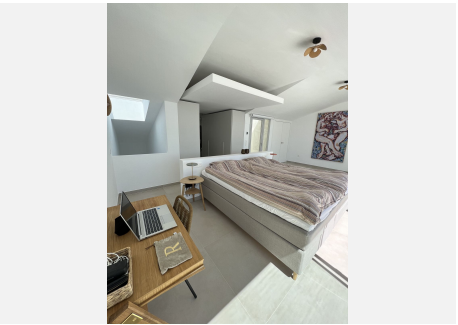
Furthermore this penthouse is equipped with best materials and high quality appliances and fully furnished and equipped with electrical appliances from Siemens. The penthouse comes also with complete underfloor heating, with modern built-in air conditioning hot and cold with Airzone, video intercom, and a pre-installation alarm system and includes two parking spaces (underground parking) and one storage room.

As an owner of this top notch penthouse you can also enjoy 2 outdoor pools, 1 indoor pool, spa, saunas & gym, several elevators and a shopping area on your doorstep, walking distance to Altos del Higuerón shopping center and Benalmádena Pueblo. Málaga Airport in proximity only a very short drive away.



# BROMLEY ESTATES

*Marbella*



# BROMLEY ESTATES

*Marbella*

