

BROMLEY ESTATES

Marbella



SEMI-DETACHED HOUSE 3 BEDROOMS 4 BATHROOMS IN LA MAIRENA

📍 La Mairena

REF# BEMR4349956 €990,000

BEDS

3

BATHS

4

BUILT

320 m²

Welcome to the Mairena twin tower, a magnificent villa located atop a mountain offering unparalleled views. This property consists of two beautiful villas, and the one being described here has undergone partial renovation, with a project available to transform it into a mirror image of its twin.

As you enter the villa, you'll be greeted by a spacious and luminous living room and dining room on the ground floor. The exquisite decor is accentuated by a stunning chandelier hanging from the tower above the dining table, giving you the feeling of dining aboard the Titanic. Additionally, there is a well-designed guest toilet on this floor.

Heading downstairs to the lower floor, you'll find three bedrooms, each with an ensuite bathroom and direct access to the garden. The garden itself offers breathtaking sea views, allowing you to wake up to stunning vistas every day.

The kitchen is conveniently connected to the lush green backyard, providing a seamless transition between

+34 952 939 460 · info@bromleyestatesmarbella.com Urbanizacion El Rosario, CN340, Km 188, Marbella, Malaga 29603

BROMLEY ESTATES

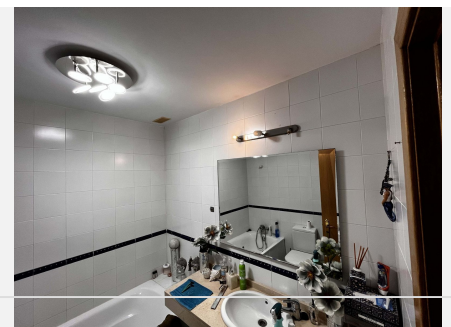
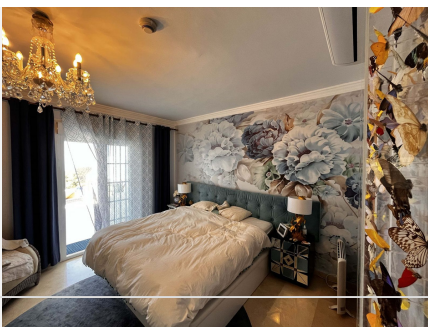
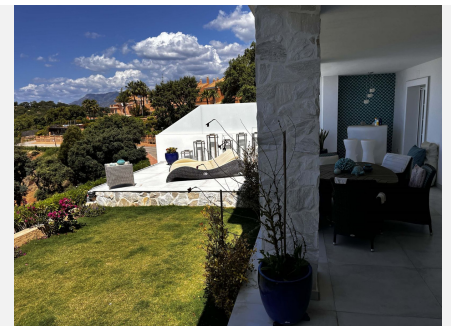
Marbella

indoor and outdoor spaces. You'll also find a large breakfast area nestled next to a fountain feature and an outdoor shower facility, allowing you to enjoy the natural surroundings while starting your day.

The main terrace of the villa offers a reminiscent atmosphere of the Greek islands, creating a serene and captivating ambiance. From here, you can admire the mesmerizing view of the sea and the protected green area, which has been recognized by UNESCO as a heritage site.

Moving to the basement, you'll discover a storage room and a garage with ample space for two cars. This provides practicality and convenience for storing your belongings and vehicles.

The villa's orientation is southwest, offering clear vistas of Africa, the Strait of Gibraltar, and the protected green area lying beneath your feet. This prime location ensures easy access to schools, amenities, and a safe cosmopolitan neighbourhood. In particular, the German school is conveniently located next door, catering to the educational needs of residents. Additionally, Elviria's amenities and beaches are just a short five-minute drive away, allowing you to indulge in the coastal lifestyle. The vibrant city of Marbella is reachable within 15 minutes, and the airport can be reached in approximately 35 minutes, ensuring convenience for travel.



BROMLEY ESTATES

Marbella

