

# BROMLEY ESTATES

*Marbella*



## MIDDLE FLOOR APARTMENT 3 BEDROOMS 3 BATHROOMS IN MARBELLA

📍 Marbella

REF# BEMR4382026 €11,900,000

BEDS	BATHS	BUILT	TERRACE
3	3	223 m <sup>2</sup>	101 m <sup>2</sup>

Papaya is a stunning duplex penthouse positioned in a highly sought-after frontline beach location within the prestigious Puente Romano Resort.

This exceptional property boasts breathtaking panoramic sea views, overlooking the community garden and our beloved coastline. Its southern orientation ensures that natural sunlight bathes the residence throughout the day, creating unparalleled sunrises and sunsets.

Papaya offers an abundance of terrace space, ideal for al-fresco dining and chill-out areas, catering to those who appreciate the outdoor lifestyle. The ground level of the property maximises the use of its outdoor spaces, allowing direct terrace access from all areas through floor-to-ceiling glass sliding doors.

The interior of the property is truly astonishing, elegantly adorned with neutral tones and hints of blue, mirroring the colours observed when gazing out towards the terrace and sea. The colour

+34 952 939 460 · [info@bromleyestatesmarbella.com](mailto:info@bromleyestatesmarbella.com) Urbanizacion El Rosario, CN340, Km 188, Marbella, Malaga 29603

# BROMLEY ESTATES

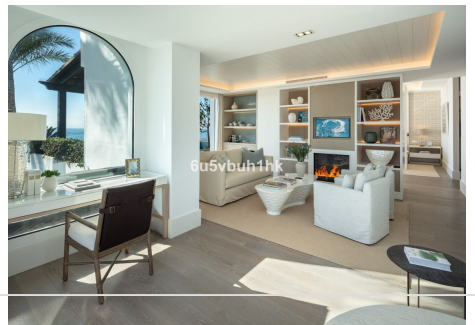
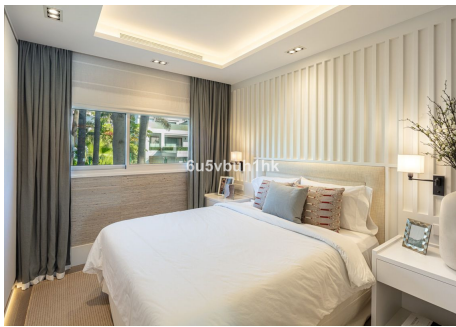
*Marbella*

palette evokes a sense of tranquillity, while the layout provides both functionality and style.

The living area is a true masterpiece, featuring an integrated bookshelf, a sophisticated bar and a cosy fireplace, seamlessly connecting to the dining area and kitchen. The kitchen combines practicality and aesthetics, showcasing a stunning kitchen island embellished with exquisite marble and equipped with state-of-the-art appliances and a wine fridge. The two guest bedrooms, situated on the ground floor, boast impeccable interior design and en-suite bathrooms.

The upper level of the property is dedicated to the opulent master bedroom. With its own private living area complete with a fireplace, the master bedroom offers an elegant walk-in closet, a spacious en-suite bathroom and an incredible private terrace that opens up to the entire master suite. The master terrace not only provides stunning views and a serene chill-out area but also features a captivating pool overlooking the glistening sea.

With its exceptional location, luxurious interiors and generous terraces this property presents a remarkable opportunity to indulge in Marbella's prestigious beachside lifestyle.



# BROMLEY ESTATES

*Marbella*

