

BROMLEY ESTATES

Marbella



PENTHOUSE DUPLEX 5 BEDROOMS 4 BATHROOMS IN TORREMOLINOS

📍 Torremolinos

REF# BEMR4387165 €1,500,000

BEDS

5

BATHS

4

BUILT

610 m²

TERRACE

196 m²

Wonderful duplex penthouse with panoramic sea views located in the exclusive urbanization "Castillo de San Luis" next to the sea and all services.

The property is distributed over 2 floors as follows:

The entrance floor located on the 1st floor is made up of a very spacious and elegant entrance hall that distributes on one side the very large living room (dining area, lounge room plus another seating area) with access to a very large terrace with a part covered with wonderful views of the sea and another open part where there is a dining table and plenty of space. In this area of the property there is also a TV room.

Going through the entrance hall is the very large fully equipped kitchen with breakfast table and a separate utility room.

From the hall, we also access to the sleeping area where there are 4 large bedrooms and 3 bathrooms (1 en suite). All bedrooms have large fitted wardrobes and access to very sunny terraces with electric awnings. Finally, and again from the entrance hall, you access the upper floor where the master bedroom is located,

+34 952 939 460 · info@bromleyestatesmarbella.com Urbanizacion El Rosario, CN340, Km 188, Marbella, Malaga 29603

BROMLEY ESTATES

Marbella

which is huge and very bright with access to a beautiful and spacious sunny terrace with 100% privacy and tranquillity with wonderful views of the sea, the beach and surroundings. The bedroom has a dressing room and a bathroom with Jacuzzi and shower.

The property is in very good condition with hot and cold air conditioning throughout the property, marble floors and bathrooms, double glazed windows with electric shutters and electric awnings on the terraces.

The property is also sold with 2 parking spaces and 2 large storage rooms.

Very well-maintained community with a beautiful community garden, swimming pool, fountains, elevators and security cameras.

Total build size 528,39m². Living area 332,39m² plus 196m² of terraces.

Garages with 34,02m² and 33,88m². Storage rooms with 24,39m² and 15,10m².

Community 561,82€ per month. IBI 2.474,14€ per year.

Year of construction 1992.

Distances:

Carihuela beach 300 meters

Torremolinos center 300 meters.

Torremolinos train station 700 meters

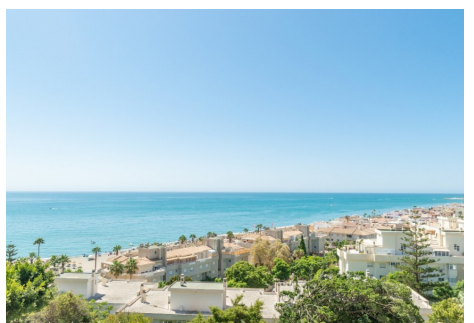
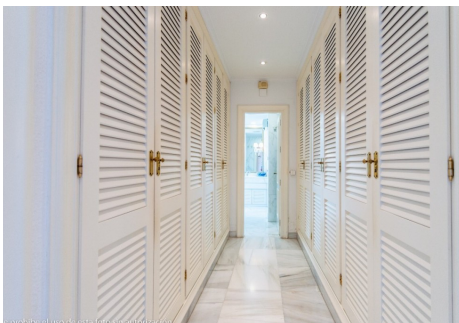
Malaga airport 7.4km.



+34 952 939 460 info@bromleyestatesmarbella.com Urbanizacion El Rosario, CN340, Km 188, Marbella, Malaga 29603

BROMLEY ESTATES

Marbella



BROMLEY ESTATES

Marbella



BROMLEY ESTATES

Marbella

