



SEMI-DETACHED HOUSE 2 BEDROOMS 2 BATHROOMS IN ESTEPONA

📍 Estepona

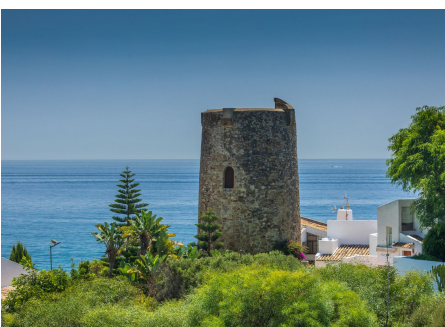
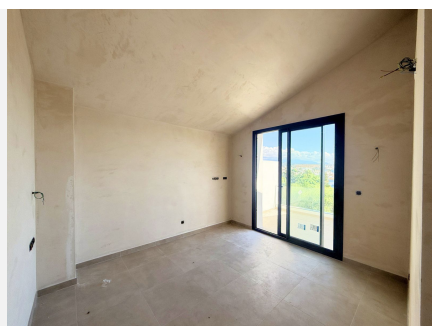
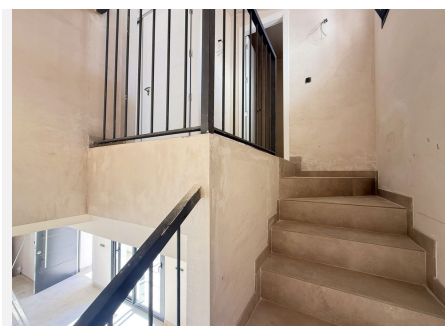
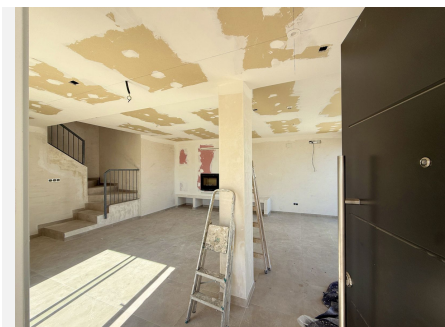
REF# R4418671 €610,000

BEDS	BATHS	BUILT	PLOT	TERRACE
2	2	124 m²	151 m²	32 m²

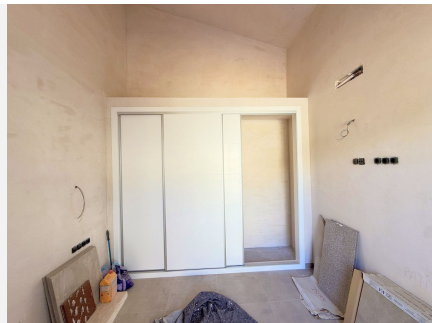
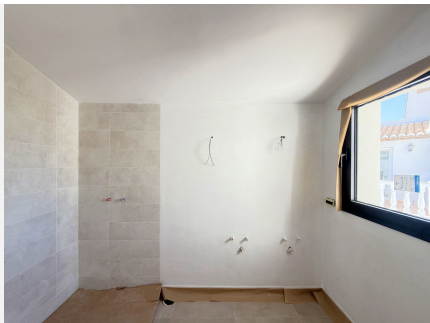
EXCLUSIVE SEMI-DETACHED HOUSE IN BAHÍA DORADA WITH PANORAMIC SEA VIEWS. Located in one of the most sought-after areas of the Costa del Sol, this modern semi-detached home is part of an exclusive project of only three residences, two of them semi-detached, and thanks to its elevated position, it offers stunning sea views just 500 meters from the beach. The property is 1.5 km from Estepona Golf, 5 minutes from Estepona Marina, and 10 minutes from Puerto de la Duquesa. Spread over two southeast-facing floors, it stands out for its abundant natural light and elegant design, with high-quality materials throughout. The kitchen is fully equipped with top-brand appliances, and the property features an arothermal water system and premium porcelain tiles, ensuring efficiency and comfort. It also includes a spacious terrace and private garden, providing the perfect setting to enjoy memorable moments with family and friends. Key handover is scheduled for the third quarter of 2025.

BROMLEY ESTATES

Marbella



BROMLEY ESTATES
Marbella



Vignetta 240	
Flotta Esiga	
● Fiat	2,31 m³
● Escudo	1,71 m³
● Exedra	2,08 m³
● Comoda	8,84 m³
● Exedra	9,40 m³
● Beta	24,20 m³
● Distributori	3,20 m³
● Distributori	13,32 m³
● Beta 1	4,32 m³
Total: 300 veicoli	64,42 m³
● Flotta	
● Terma 1	22,74 m³
Total: 300 abitanti	26,49 m³
Total: comitate	89,79 m³
Flotta Primera	
● Escudo	4,10 m³
● Distributori	1,25 m³
● Exedra	1,77 m³
● Beta 2	6,77 m³
Total: 300 veicoli	26,30 m³
● Terma 2	8,40 m³
Total: 300 abitanti	8,40 m³
Total: comitate	35,06 m³
Total vignetta	
Total: 300 veicoli	92,61 m³
Total: 300 abitanti	34,90 m³
Total: comitate	124,45 m³

