



## TOWNHOUSE 4 BEDROOMS 3 BATHROOMS IN NUEVA ANDALUCIA

📍 Nueva Andalucia

REF# BEMR4422025 €795,000

BEDS

4

BATHS

3

BUILT

154 m<sup>2</sup>

TERRACE

80 m<sup>2</sup>

Fantastic townhouse within walking distance to numerous restaurants and facilities and undeniable rental income.

This spacious townhouse is located in charming Aloha Pueblo, in the heart of Golf Valley. Close to Puerto Banus and central Marbella, needless to say set among many golf courses.

Aloha Pueblo itself has few restaurants inside the community and within a walking distance there are many more dining options, bars, shops and sport facilities in Aloha area.

Renowned Aloha Collage only 5 minutes walk.

Puerto Banus with its wide variety of restaurants and lively nightlife is only 5 minutes" drive away, with the beach being same distance away.

# BROMLEY ESTATES

## *Marbella*

The property has 4 bedrooms with capacity to accommodate 7 people. Saying that, this particular townhouse is an absolute best seller for rental income with heavy occupancy and managed by the company located inside the urbanization.

Ideal case for investment opportunity.

High season: 350-400€ per night

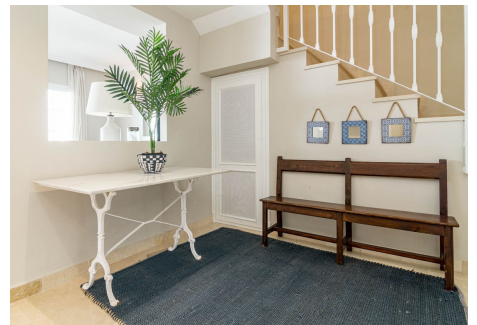
Mid season: 225-250€ per night

Kitchen has been fully reformed making the ground floor airier and it's connected with sunny terrace.

Roof terrace has enormous space with options for outdoor kitchen, lounge area and sun beds with breathtaking views to La Concha and distance views to the sea.

Furthermore, 3D pictures has been created to show more possibilities for this property.

Don't miss out on amazing opportunity to have a very well-priced holiday home and secured rental income.





# BROMLEY ESTATES

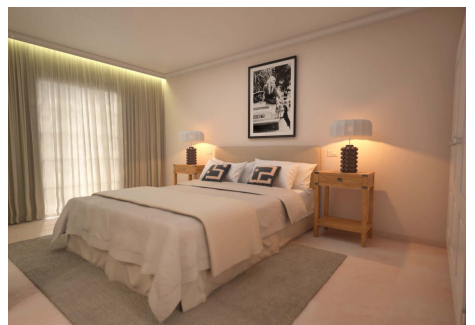
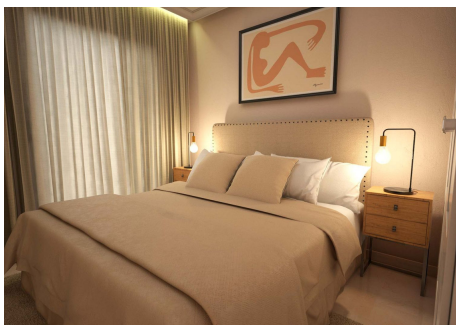
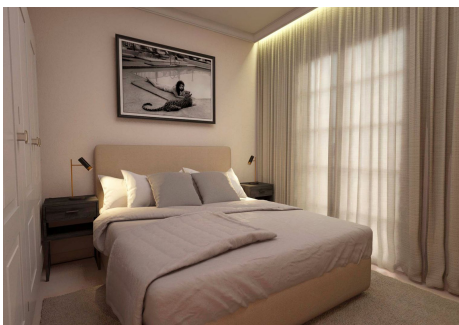
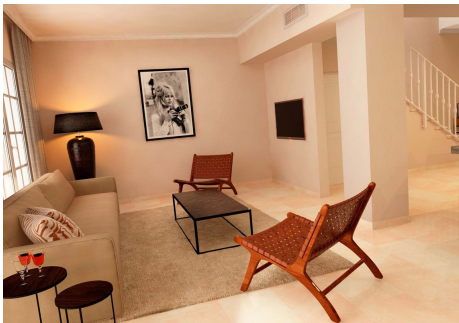
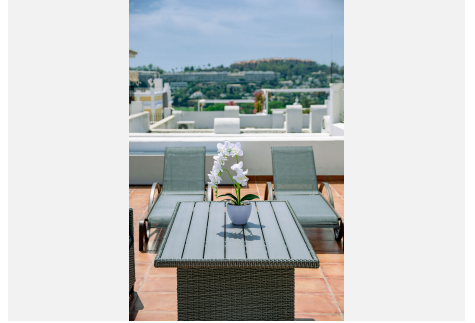
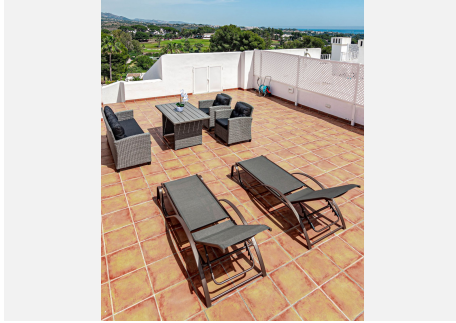
## *Marbella*





# BROMLEY ESTATES

## *Marbella*





# BROMLEY ESTATES

## *Marbella*

