



SEMI-DETACHED HOUSE 5 BEDROOMS 4 BATHROOMS IN PUERTO BANÚS

📍 Puerto Banús

REF# BEMR4423612 €1,440,000

BEDS	BATHS	BUILT	PLOT	TERRACE
5	4	230 m ²	90 m ²	80 m ²

Beautiful and bright Semi Detached House , located in a exclusive area , between Puerto Banus and Cortigo Blanco {Azalea Beach} A few steps from the beach , bar's ,restaurants and Guadalpin Hotel.This property it has 5 spacious bedrooms and 4 bathrooms, 2 in sweet, private parking space, beautiful and private garden, community pools.

Semi-Detached House, Puerto Banús, Costa del Sol.
4 Bedrooms, 4 Bathrooms, Built 250 m², Terrace 100 m², Garden/Plot 50 m².

Setting : Beachside, Close To Port, Close To Marina, Urbanisation.

Orientation : East.

Condition : Recently Renovated.

Pool : Communal.

Climate Control : Air Conditioning.

Views : Garden, Pool.

+34 952 939 460 · info@bromleyestatesmarbella.com Urbanizacion El Rosario, CN340, Km 188, Marbella,
Malaga 29603

BROMLEY ESTATES

Marbella.

Features : Covered Terrace, Near Transport, Private Terrace, Ensuite Bathroom, Marble Flooring, Double Glazing.

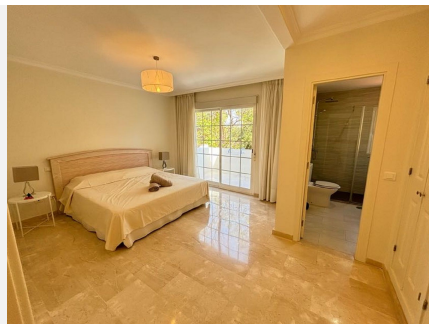
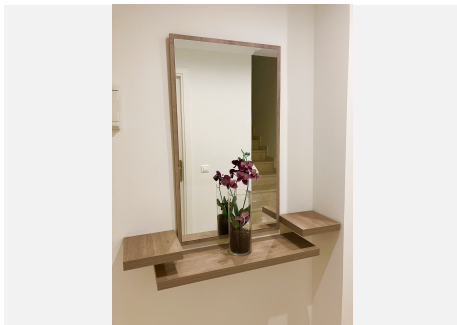
Kitchen : Fully Fitted.

Garden : Communal, Private.

Security : Gated Complex, Entry Phone, Safe.

Parking : Underground.

Category : Holiday Homes, Investment.



BROMLEY ESTATES

Marbella

