

HOSTEL 11 BEDROOMS 10 BATHROOMS IN SAN PEDRO DE ALCANTARA

📍 San Pedro de Alcantara

REF# BEMR4432213 €1,500,000

BEDS

11

BATHS

10

BUILT

345 m²

Hostel for Sale – Great Investment Opportunity in San Pedro Alcántara

An excellent opportunity for a family-operated business, this hostel is located in San Pedro Alcántara and boasts a prime investment potential. With a built area of 300 square meters, the hostel features 11 rooms, 9 bathrooms, 1 dedicated room for linens and towels, and a private bathroom.

Key Features:

- Reception Area: Well-organized reception to welcome guests.
- Office Space: Efficient office area for managing daily operations.
- Hallway: Spacious hallway providing easy access to all rooms.
- In-Room Amenities: Each room is equipped with a TV, wardrobes, and Wifi for the convenience of guests.
- Air Conditioning: Air conditioning in all rooms ensures a comfortable stay.
- Natural Light: Ample natural light throughout the hostel creates a pleasant ambiance.

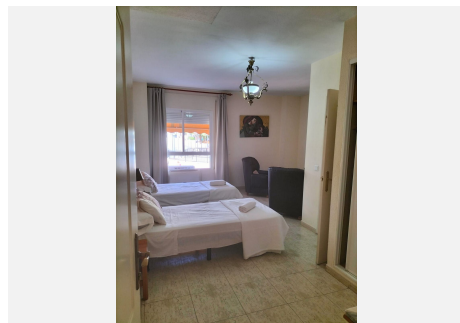
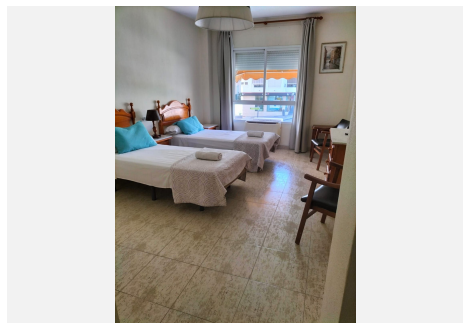
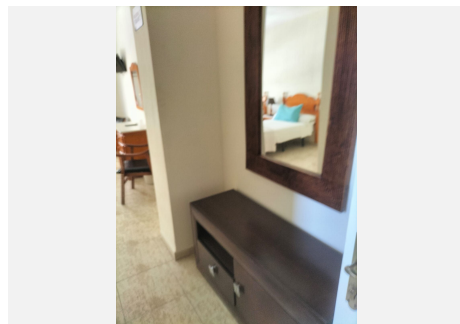
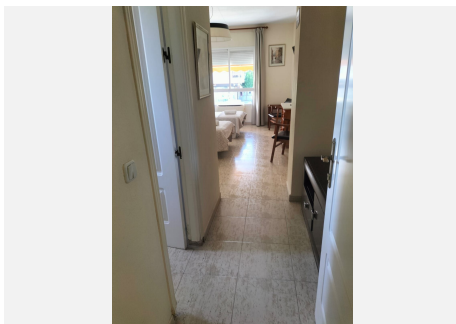
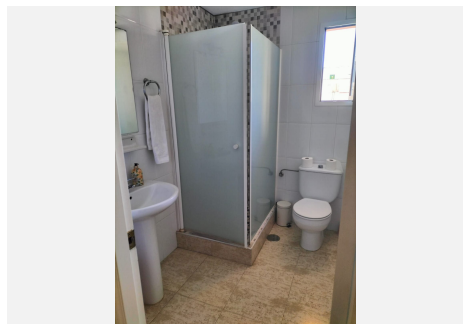
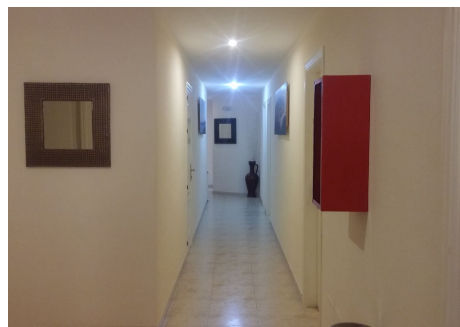
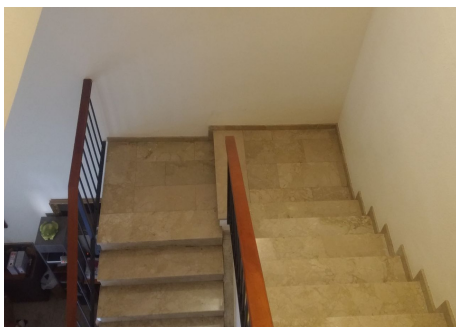
+34 952 939 460 · info@bromleyestatesmarbella.com Urbanizacion El Rosario, CN340, Km 188, Marbella, Malaga 29603

BROMLEY ESTATES

Marbella

- Year-round Operation: Operating 365 days a year, ensuring a consistent flow of business.
- Financial Overview:
- Waste Disposal: €86 every six months (€172 annually).
- Community Fees: Approximately €320.
- Electricity Costs: Around €586 in the summer months.
- Profitable Venture: The hostel has demonstrated solid financial performance, offering good returns on investment.

This property presents an enticing opportunity for those looking to enter the hospitality industry or expand their portfolio. With well-appointed rooms, essential amenities, and a strategic location, this hostel is poised to continue its success as a thriving business. Don't miss the chance to make this lucrative investment in the heart of San Pedro Alcántara! ????



BROMLEY ESTATES

Marbella

