



PENTHOUSE 3 BEDROOMS 2 BATHROOMS IN LA MAIRENA

📍 La Mairena

REF# BEMR4445044 €499,000

BEDS

3

BATHS

2

BUILT

126 m²

TERRACE

14 m²

Nestled in the serene and tranquil enclave of La Mairena, this remarkable penthouse is a true gem of the south coast. Offering a captivating panorama of the Mediterranean Sea, extending all the way to the iconic profiles of Gibraltar and Africa, this exceptional property promises a slice of paradise.

With its south-facing orientation, this penthouse is privileged to receive an abundance of natural light and sunshine, blessing its inhabitants from dawn till dusk. The uninterrupted views of the sea are complemented by the occasional passage of ships, adding to the enchantment of this location. Finding a property with such an optimal south-facing aspect is indeed a rare treasure, making this penthouse truly extraordinary.

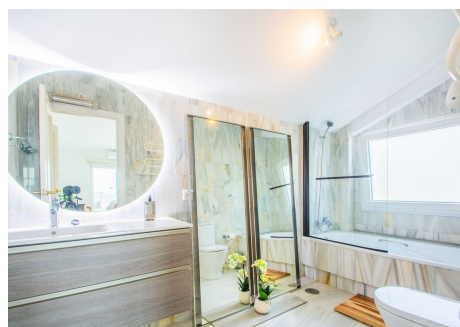
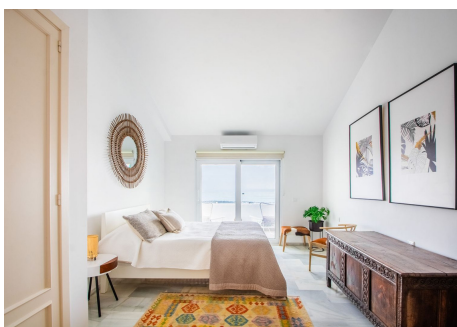
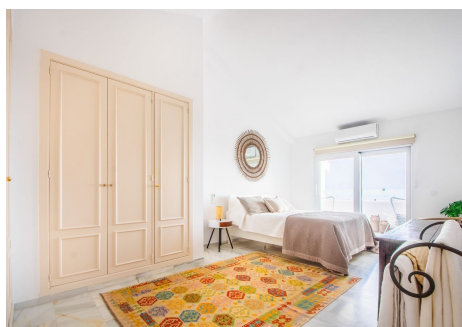
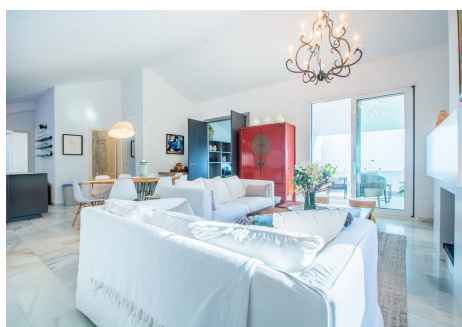
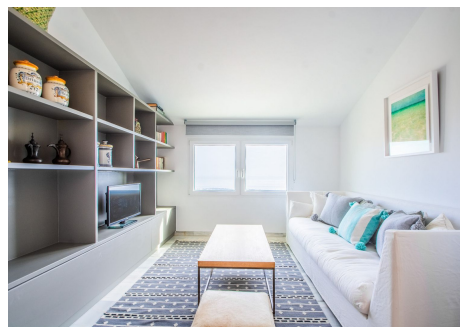
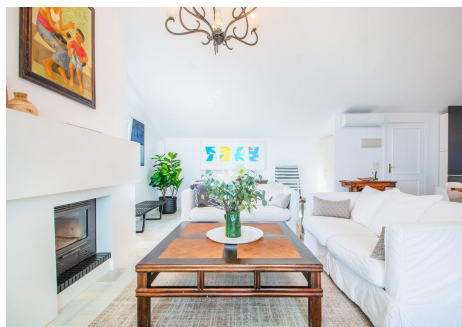
Situated just a short 2-minute drive from a delightful selection of restaurants and a mere 10-minute journey to the beautiful coastal surroundings, this penthouse effortlessly combines the tranquility of the mountains with the vibrancy of the coast. Whether you seek a permanent residence for your family or a serene holiday retreat, this property caters to diverse lifestyles and preferences.

+34 952 939 460 · info@bromleyestatesmarbella.com Urbanizacion El Rosario, CN340, Km 188, Marbella, Malaga 29603

BROMLEY ESTATES

Marbella

The penthouse features a double-height ceiling, imparting a sense of grandeur and spaciousness. It has been tastefully refurbished, ensuring that it boasts modern amenities and comforts, harmoniously blending contemporary living with the enchantment of its natural surroundings. In summary, this south-facing penthouse in La Mairena is a unique, sun-soaked haven with breathtaking vistas, offering an idyllic retreat for those seeking the best of both mountain and coastal living.



BROMLEY ESTATES

Marbella

