

BROMLEY ESTATES

Marbella



MIDDLE FLOOR APARTMENT 2 BEDROOMS 2 BATHROOMS IN BENAHAVIS

📍 Benahavis

REF# BEMR4505467 €1,295,000

BEDS

2

BATHS

2

BUILT

122 m²

TERRACE

40 m²

The View is a highly esteemed gated community that offers breathtaking panoramic views extending from the picturesque hills of Benahavis to the stunning Mediterranean Sea and beyond. Its location is conveniently just a ten-minute drive from San Pedro and a fifteen-minute drive to the vibrant center of Puerto Banús. As the proud owner of this exclusive penthouse, you will enjoy the benefits of 24-hour security, a dedicated concierge service, and a wellness center complete with a spa, state-of-the-art fitness facility, and both indoor and outdoor pools. The meticulously designed tropical gardens create a lush oasis within this sophisticated setting.

This home has been thoughtfully crafted to maximize natural light and features exquisite materials throughout. The spacious open-plan living and dining area seamlessly blend with the kitchen, which is equipped with top-of-the-line Miele appliances. The master bedroom, with its access to a terrace, offers a serene retreat, while an additional guest room, a practical guest toilet, and a dedicated space for a washing machine and tumble dryer provide convenience. Each room grants access to the expansive terrace, which

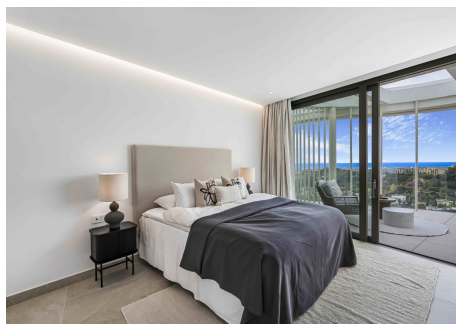
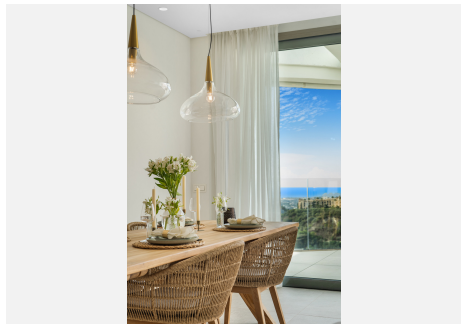
+34 952 939 460 · info@bromleyestatesmarbella.com Urbanizacion El Rosario, CN340, Km 188, Marbella, Malaga 29603

BROMLEY ESTATES

Marbella

offers a truly panoramic view.

To enhance comfort, the penthouse includes customizable climate control with both cooling and heating functions, as well as water-based underfloor heating with different zones. Additionally, two private parking spaces and a storage room are provided, with one parking space equipped with electric car charging capabilities. This exceptional penthouse epitomizes a superior standard of living. Welcome to your new dream home!



BROMLEY ESTATES

Marbella

