



HOUSE 5 BEDROOMS 5 BATHROOMS IN BENAHAVIS

 Benahavis

REF# BEMR4544113 €5,200,000

BEDS

5

BATHS

5

BUILT

427 m²

PLOT

3500 m²

A striking example of newly constructed contemporary architecture nestled in the tranquil Monte Mayor enclave of Benahavis. This pristine gem was freshly constructed in 2023 and boasts an impressive four-story design sprawling across 427 square meters, all set on a generous 3500 square meter plot.

Upon entering this west-facing luxury retreat, you'll be captivated by sweeping views of the serene mountains and lush green landscapes. This villa meticulously showcases every aspect of luxury and modernity. With five spacious bedrooms and an equal number of pristine bathrooms, there's plenty of room for everyone to luxuriate in their personal sanctuary. The villa flows seamlessly across four levels, ensuring distinct spaces for entertainment, relaxation, and extravagant living.

The heart of any home is its kitchen, and this house certainly doesn't disappoint. Fitted with top-notch Miele appliances, it's a dream come true for culinary enthusiasts. What sets this property apart are the thoughtful extras it offers. Not only is it sold fully furnished with brand-new, stylish furniture, but it also features an indoor pool and an exclusive spa, delivering the epitome of luxurious living.

Outdoor aficionados will be delighted by the villa's extensive terraces, both covered and uncovered, perfect for evening gatherings or serene morning coffees. The grounds are equally impressive, with a private garden for those seeking a moment of tranquility with nature. On sun-drenched days, the private swimming

+34 952 939 460 • info@bromleyestatesmarbella.com Urbanización El Rosario, CN340, Km 188, Marbella, Malaga 29603

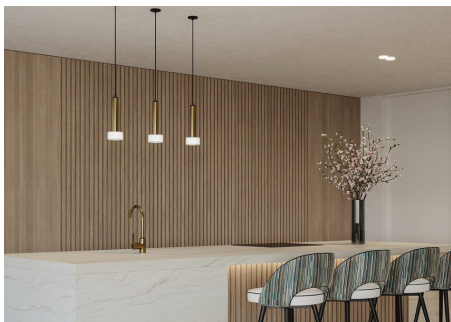
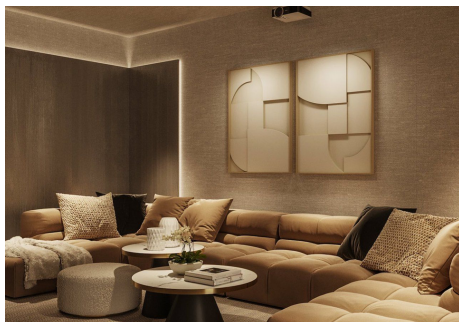
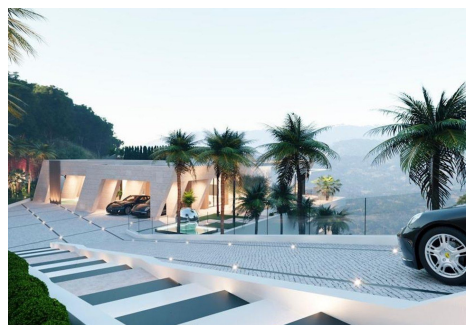
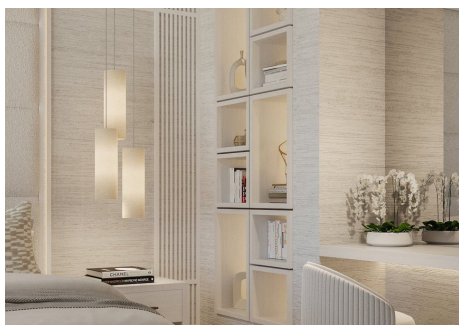
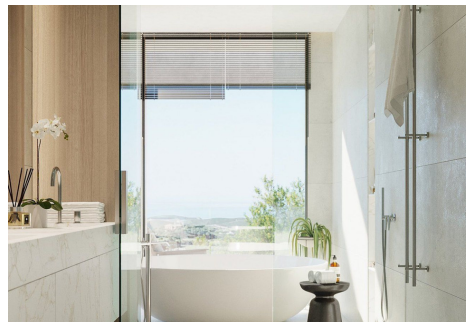
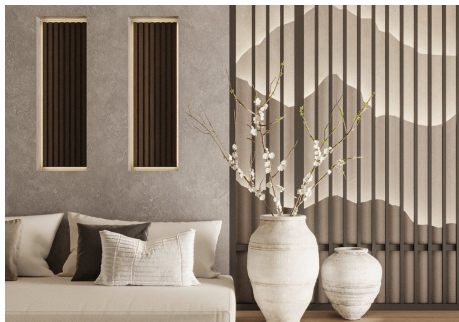
BROMLEY ESTATES

Marbella

pool beckons for a refreshing dip.

For those with vehicles, this property provides covered parking for two cars along with a spacious driveway. Convenience is key when it comes to location. Gourmet restaurants are just an 8-minute drive away, while shops, schools, and the beach are easily accessible with a short 15 to 20-minute car journey.

This Villa isn't just a property; it's a testament to the fusion of luxury, modernity, and new beginnings. Experience the pinnacle of sophisticated living in this exquisite Benahavis residence.



BROMLEY ESTATES

Marbella

