

BROMLEY ESTATES

Marbella



HOUSE 4 BEDROOMS 4 BATHROOMS IN MIJAS

📍 Mijas

REF# BEMR4583299 €675,000

BEDS	BATHS	BUILT	PLOT	TERRACE
4	4	269 m ²	850 m ²	74 m ²

Set in a quiet cul de sac overlooking a forested green zone valley with sea views close to Mijas pueblo and with easy access to Fuengirola and the airport ,also with sea and mountain views you have large South west 4 bed villa with offstreet secure parking , gated entrance to a walled front terrace with access to the open plan kitchen diner wc , one bedroom /office on this mezzanine floor overlooking a vaulted living room with open and covered terraces,open staircase to the lower floor which has 2 double bedrooms with one ensuite plus a master bedroom with walk in closet and ensuite bathroom. there is a large terraced pool area plus jacuzzi and storeroom with a futher shower and outdoor guest showeroom, access to lower level gardenwhich slopes to the green zone of the forested valley. easy access to bars and restaurants. Owner willing to do rent to buy for six months at 675000 price .

Detached Villa, Mijas, Costa del Sol.

4 Bedrooms, 4 Bathrooms, Built 269 m², Terrace 74 m², Garden/Plot 850 m².

Setting : Suburban, Close To Shops, Close To Schools, Urbanisation.

Orientation : South West.

Condition : Excellent.

+34 952 939 460 · info@bromleyestatesmarbella.com Urbanizacion El Rosario, CN340, Km 188, Marbella, Malaga 29603

BROMLEY ESTATES

Marbella

Pool : Private.

Climate Control : Hot A/C, Cold A/C, Fireplace.

Views : Sea, Country, Panoramic, Garden, Forest.

Features : Covered Terrace, Fitted Wardrobes, Near Transport, Private Terrace, WiFi, Storage Room, Utility Room, Ensuite Bathroom.

Furniture : Not Furnished.

Kitchen : Fully Fitted.

Garden : Private.

Security : Gated Complex.

Parking : Open, Private.

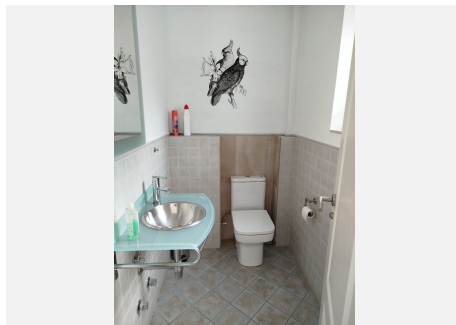
Utilities : Electricity.

Category : Resale.



BROMLEY ESTATES

Marbella



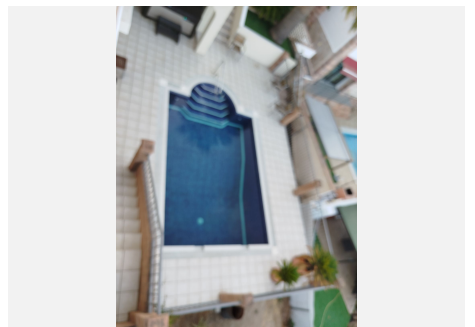
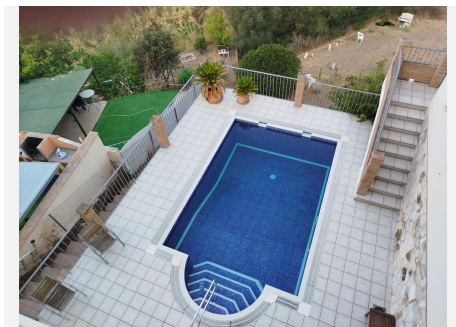
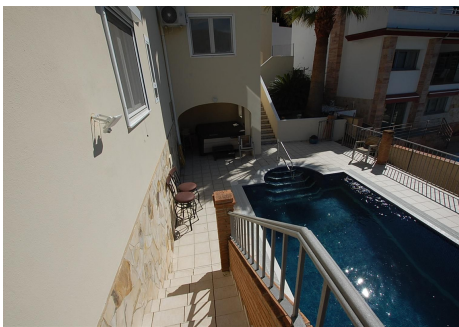
BROMLEY ESTATES

Marbella



BROMLEY ESTATES

Marbella



BROMLEY ESTATES

Marbella

