



## MIDDLE FLOOR APARTMENT 2 BEDROOMS 2 BATHROOMS IN PLAYAMAR

📍 Playamar

REF# BEMR4592521 €465,000

BEDS

2

BATHS

2

BUILT

96 m<sup>2</sup>

TERRACE

30 m<sup>2</sup>

### Description of Seaside Apartment:

This charming 96-square-meter apartment offers an exceptional living experience in a prime location just 50 meters from the beach. With a very large private terrace equipped with Lumon glazing, this home provides a direct connection to the coastal surroundings and breathtaking panoramic sea views.

### Key Features:

Area: 96 square meters.

Private Terrace: Enjoy unforgettable moments on a very large private terrace, equipped with Lumon glazing that allows you to savor sea views in any weather.

Sea Views: Spectacular sea views from the apartment and terrace provide a stunning backdrop at every time of the day.

# BROMLEY ESTATES

*Marbella*

## Interior Layout:

Spacious living-dining room with direct access to the terrace, creating a bright and open space.

Fully equipped kitchen with modern appliances and space for casual dining.

Two comfortable bedrooms with abundant natural light.

Well-designed bathrooms for comfort and style.

## Location:

Just 50 meters from the beach, this apartment gives you immediate access to the sand and sea.

Close to local shops, restaurants, and essential services for convenient everyday living.

Easy access to the city, allowing you to enjoy urban life without sacrificing the serenity of the coastal environment.

## Additional Features:

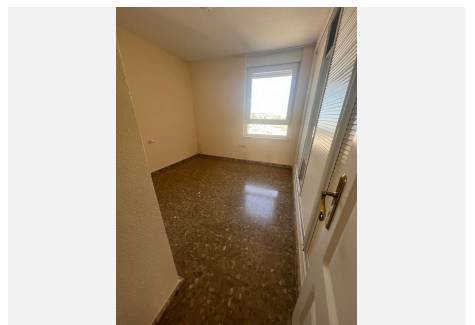
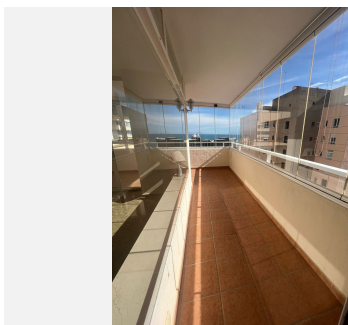
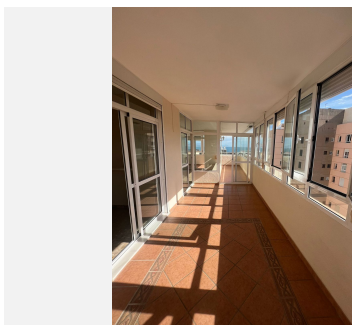
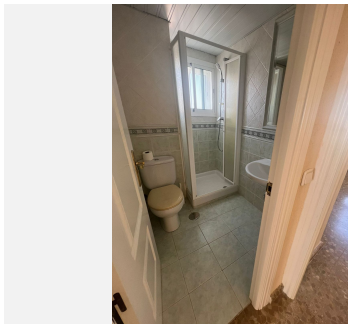
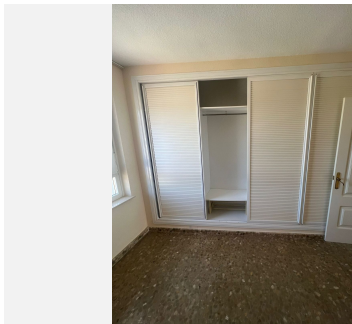
Lumon glazing on the terrace for enjoying views regardless of weather conditions.

Elegant and contemporary interior design.

Thoughtfully utilized spaces maximizing light and space.

Direct access to the beach for enjoying sunny days and unforgettable sunsets.

This apartment offers a perfect combination of elegance, comfort, and an unbeatable location. Experience waking up every day to the sound of the sea and stunning views from your own private terrace.



# BROMLEY ESTATES

## *Marbella*

---

