

BROMLEY ESTATES

Marbella



HOUSE 5 BEDROOMS 7 BATHROOMS IN BENAHAVIS

📍 Benahavis

REF# BEMR4629583 €4,695,000

BEDS

5

BATHS

7

BUILT

1070 m²

PLOT

5000 m²

TERRACE

500 m²

OFF-PLAN LUXURY ECOLOGICAL CONTEMPORARY VILLA- KEY-IN-HAND PROJECT ON A HUGE PLOT –BENAHAVIS only 4,9 km from the beaches in San Pedro de Alcántara and will be built on 3 floors.

Ground floor: Entrance hall with guest toilet, cloakroom, staircase to the basement and elevator, living/dining area, open plan kitchen, fully fitted with Bosch white goods and pantry, 1 bedroom with ensuite bathroom, and the master bedroom with dressing and ensuite bathroom. There will be a huge terrace with a heated pool and an outside staircase that leads to the lower level and sitting area.

First floor: 2 bedrooms with 2 bathrooms, storage room and a bedroom with dressing and ensuite bathroom, all bedrooms have access to a huge terrace.

Basement/garage: garage for at least 4 cars and separate storage room, distributor, technical room, gymnasium, cinema room, diaphanous room, and 2 storage rooms, furthermore on this level you also have a sitting area. On the terrace, you have a chill-out-sitting area with an outdoor kitchen and views into the pool.

Pictures of the bathrooms and kitchen are only examples final choice of the finishings shall be for the client within the chosen line that we propose.

+34 952 939 460 · info@bromleyestatesmarbella.com Urbanización El Rosario, CN340, Km 188, Marbella, Málaga 29603

BROMLEY ESTATES

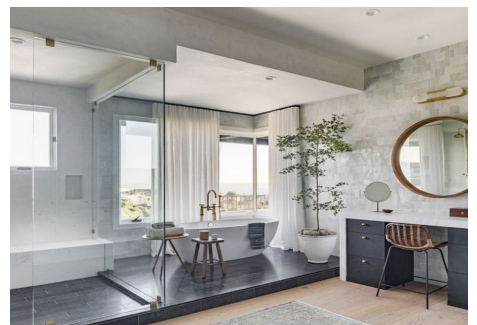
Marbella.

Example of some of the specifications,

- Interior and exterior floor tiles from GRESPANIA 600x600 – 800x800 – 1200x1200 (Color and size to choose)
- Bathroom walls with COVERLAM plates (GRESPANIA) 2700X1200 (Color to choose)
- Bathrooms from ROCA – DURAVIT – VILLEROY BOCH – GEBERIT – HANSGROHE OR SIMILAR
- Aerothermia/airconditioning
- Elevator from Schindler or similar
- Underfloor heating in the full villa
- Ceiling high windows with a sunken track, 5+5/chamber/6+6
- Ceiling high and 1-meter wide interior doors
- Fully fitted kitchen with aluminum frame doors and covered with COVERLAM (Color to choose)
- Island with COVERLAM 3600X1600 no visible joints (Color to choose)
- White goods from Bosch or AEG
- Heated pool
- 30 solar panels
- 3 lithium batteries of each 10kW
- Car charger
- Domotica

We are a construction company, Key-in-Hand, that can design and construct any possibility you can think of. If you do not see a design of us that you like we design a totally new villa for you according to your ideas and input.

Although we prefer to construct ecological building, we can construct from traditional construction to ecological constructions it all depends on you.



BROMLEY ESTATES

Marbella

