



SEMI-DETACHED HOUSE 3 BEDROOMS 2 BATHROOMS IN BENALMADENA PUEBLO

📍 Benalmadena Pueblo

REF# BEMR4662289 €575,000

BEDS

3

BATHS

2

BUILT

167 m²

PLOT

78 m²

TERRACE

121 m²

A spacious, 3 bedroom, 2 bathroom, semi detached house in the ever popular and luxurious Rancho Domingo urbanisation close to Benalmadena Pueblo. The house faces south east and has panoramic sea views from the large wrap around private solarium. At the entrance to the property there is a covered porch leading to the hallway. On either side of the hallway is a double bedroom sharing a family bathroom with additional shower. The spacious lounge/diner, with fireplace, runs off the hallway and shares access to a terrace which is also accessible from the fitted kitchen. Returning to the hallway stairs lead both up and down. To the lower floor there is the master bedroom with access to a covered terrace and ensuite shower room. This level also gives access to the ample walled, easy maintenance garden, storage room, large garage and ample driveway. Returning to the hallway there is access to the staircase leading to the wrap around solarium of more than 59m² boasting panoramic views of the sea and surrounding area.

A very spacious property offering panoramic views and large outside spaces.

Semi-Detached House, Benalmadena Pueblo, Costa del Sol.

3 Bedrooms, 2 Bathrooms, Built 167 m², Terrace 121 m², Garden/Plot 78 m².

+34 952 939 460 · info@bromleyestatesmarbella.com Urbanizacion El Rosario, CN340, Km 188, Marbella, Malaga 29603

BROMLEY ESTATES

Marbella.

Setting : Village, Mountain Pueblo, Close To Golf, Urbanisation.

Orientation : South East.

Condition : Excellent.

Pool : Communal.

Climate Control : Air Conditioning, Fireplace.

Views : Sea, Panoramic.

Features : Covered Terrace, Fitted Wardrobes, Near Transport, Private Terrace, Solarium, WiFi, Ensuite

Bathroom, Marble Flooring, Near Church.

Furniture : Optional.

Kitchen : Fully Fitted.

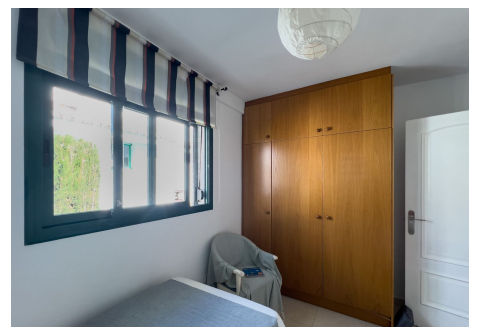
Garden : Communal, Private, Easy Maintenance.

Security : Gated Complex, Entry Phone.

Parking : Garage, Covered, Private.

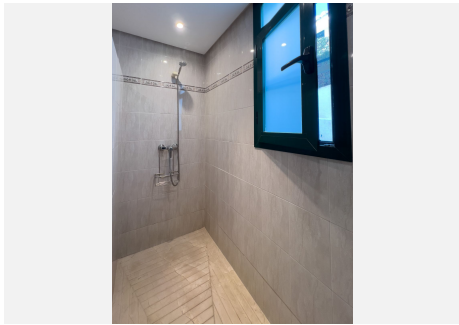
Utilities : Electricity.

Category : Luxury, Resale.



BROMLEY ESTATES

Marbella



BROMLEY ESTATES

Marbella.



BROMLEY ESTATES

Marbella

