

BROMLEY ESTATES

Marbella



PENTHOUSE DUPLEX 4 BEDROOMS 2 BATHROOMS IN NUEVA ANDALUCIA

📍 Nueva Andalucia

REF# BEMR4693555 €1,695,000

BEDS

4

BATHS

2

BUILT

172 m²

TERRACE

200 m²

Elegant duplex penthouse in the popular Magna Marbella – complex in Nueva Andalucia, Marbella. West facing with panoramic views over Magna Golf, San Pedro de Alcántara and onto sea. On clear days especially during winter you even see Gibraltar in the background. Composed of a brand-new open plan kitchen with breakfast table and living room with dining area, double height ceiling and access to an ample partly covered, partly open terrace. The master bedroom suite offers full privacy and direct access to the 54m² large terrace. Another 3 bedrooms are also situated on this level, sharing a large family bathroom. Upstairs is the 148m² large sundeck surrounding the brand-new private plunge pool. Also, from here are even more commanding views, including to Marbella's famous mountain "La Concha".

SPECS include alarm system, A/C hot & cold, under floor heating throughout, built-in wardrobes, double glazing, marble floors, etc. In the garage are 2 parking spaces + 2 storerooms.

+34 952 939 460 · info@bromleyestatesmarbella.com Urbanizacion El Rosario, CN340, Km 188, Marbella, Malaga 29603

BROMLEY ESTATES

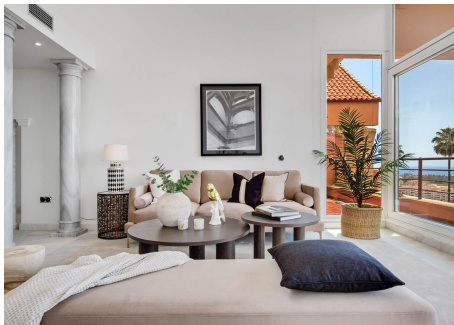
Marbella.

ABOUT THE COMPLEX: Magna Marbella is a landmark complex that sits in one of the highest points in Nueva Andalucia, hence offering commanding views. It offers 2 large pool areas, including on-site 24-H security guard, CCTV.

ABOUT NUEVA ANDALUCIA is also known as the Golf Valley, offering some of the most prestigious residential locations around Marbella. The open areas are dominated by the golf courses at Las Brisas, Aloha, Los Naranjos and La Quinta, all with clubhouse facilities. Nueva Andalucía is also fast becoming known for its international cuisine.

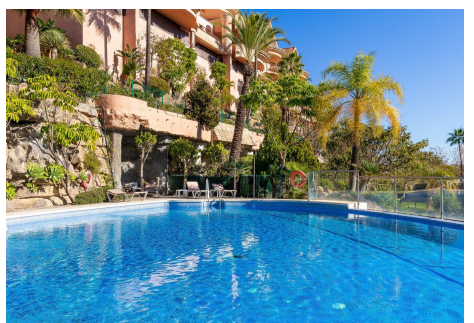
Each Saturday morning is an excellent street market, also called 'rastro', taking place between Centro Plaza and Marbella Arena, where you can buy everything from carpets, antiques, fruits and flowers to clothing, etc. Aside from recreational, sport and commercial facilities, Nueva Andalucía has several schools, including the international Aloha College. It is also home to one the Costa del Sol's two casinos, which boasts a vast gaming room as well as various other facilities.

Distances in car – Puerto Banus in less than 10 minutes, Marbella town + San Pedro de Alcantara 10 minutes, Malaga international airport with 45 minutes.



BROMLEY ESTATES

Marbella



BROMLEY ESTATES

Marbella

