

BROMLEY ESTATES

Marbella



MIDDLE FLOOR APARTMENT 2 BEDROOMS 2 BATHROOMS IN PUERTO BANÚS

📍 Puerto Banús

REF# BEMR4700695 €375,000

BEDS

2

BATHS

2

BUILT

93 m²

TERRACE

21 m²

New to the market, a fantastic 2 bed, 2 bath apartment in the popular Dama de Noche, walking distance to the famous Puerto Banus where you will find the best bars, restaurants and designer stores.

The apartment faces the pool and garden and has incredible views of the La Concha mountain.

This development is renowned for its popularity with holiday makers and makes a sound investment, whether it's for a holiday home or for holiday rentals, the development has always been popular with property investors.

The apartment has two bedrooms, one bedroom on-suite and a family bathroom.

Both bedrooms come with fitted wardrobes.

There is a fully fitted kitchen with a utility room.

The apartment comes with air conditioning, hot and cold, underground parking and the terrace has glass curtains, allowing you to use the terrace throughout the winter months.

There are padel courts for private use and two large swimming pools, both with beach entry making it easier for young children.

+34 952 939 460 · info@bromleyestatesmarbella.com Urbanizacion El Rosario, CN340, Km 188, Marbella, Malaga 29603

BROMLEY ESTATES

Marbella

The development is gated, comes with an on site restaurant and 24HR security.
Stunning large gardens completes this ever popular development, and all situated within a short walk to the best beaches and Puerto Banus.

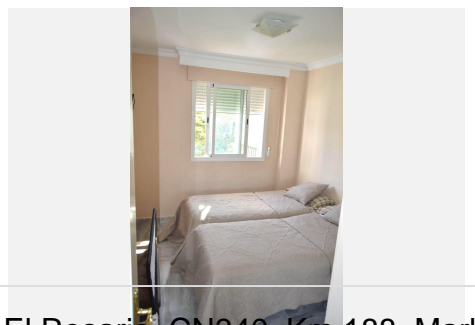
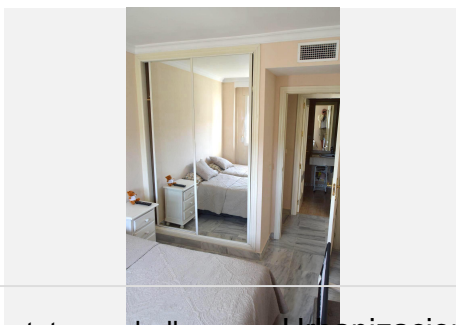
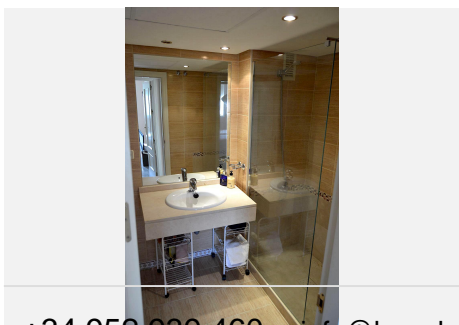
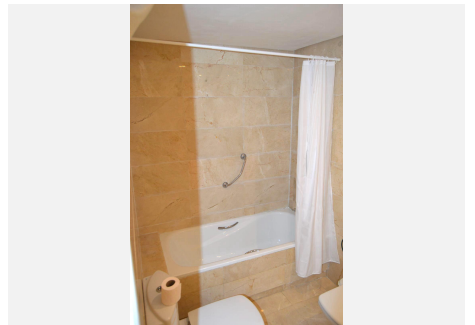
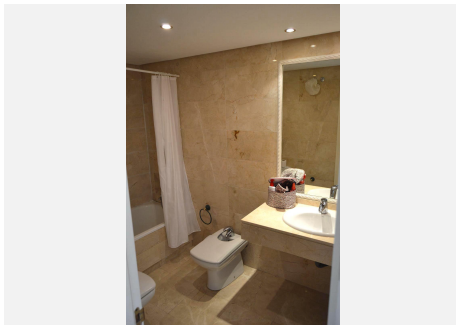
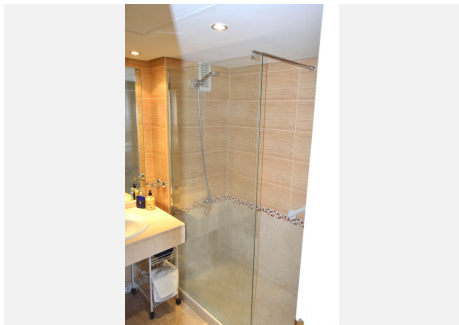
For golf fans, there is a golf course directly behind the development.

Keys held in office and viewings can be arranged at short notice.

Viewing is highly recommended!

THIS PROPERTY HAS AN LPO LICENSE

VFT LICENSES ARE NOT ISSUED FOR THIS DEVELOPMENT



BROMLEY ESTATES

Marbella

