



MIDDLE FLOOR APARTMENT 1 BEDROOM 2 BATHROOMS IN DOÑA JULIA

📍 Doña Julia

REF# BEMR4723990 €299,000

BEDS

1

BATHS

2

BUILT

90 m²

TERRACE

32 m²

This perfect holiday investment rental property is a 1 bedroom to make 2 double bedrooms out of it, sleep 6 people or 7!

The huge terrace is 2 separate areas and can be made the second bedroom very easily with a thin wall and an extra thick curtain to the window from the living room.

This urbanisation with incredible sea views is only 3 minutes drive to the beach of Casares Costa and next to Doña Julia golf. The new construction of a 5-6 star Hilton hotel one of the most luxurious Hiltons "Conrad" is being built just next to this urbanisation which finishes in 2025 and will raise the value of those apartments most probably. There are not too many apartments that makes the urbanisation more private and with only 2 floors it looks very beautiful and idyllic with this size.

You will find the kitchen at your left side when you enter into the spacious, luminous living room with sea views already from the dining table and to the enormous terrace with its chill out area in the left corner and the glass curtains which make it the warmest place in the winter from that covered terrace with the best sea

BROMLEY ESTATES

Marbella

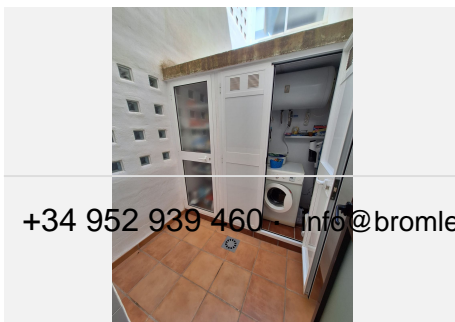
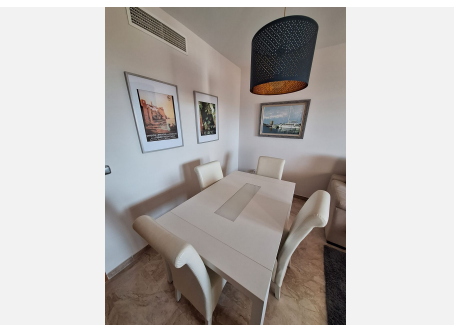
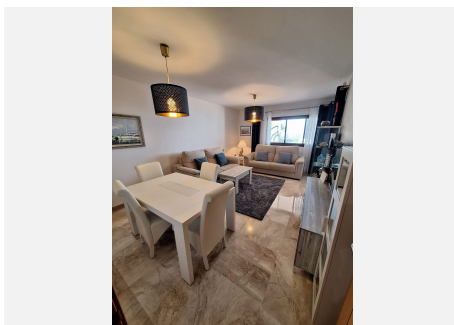
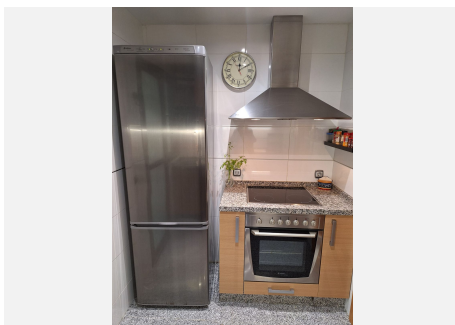
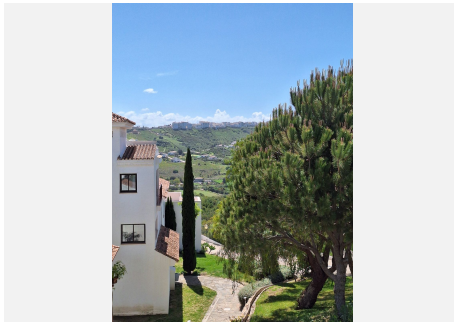
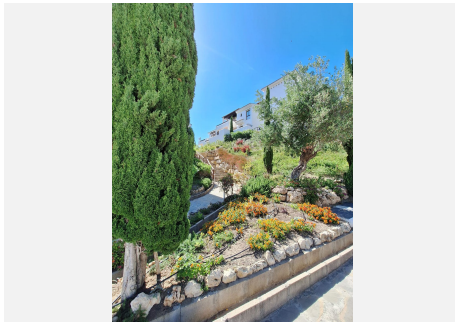
views and south orientation.

Walking into a small corridor on the right on your left side you will have the doble bedroom en suite with a complete nice bathroom and with sea views from your bed. The second bathroom is in that small corridor on the right side of the living room and has a shower instead of a bathtub.

The two parking space are underground and there you also have a storage room.

You can drive in 10 minutes to Puerto Duquesa and in 15 minutes to Estepona. To The airport of Malaga you would need more than an hour , dependding on which highway you drive it could be in 1 hour and to th eGibraltar airport you would need only 40 minutes drive

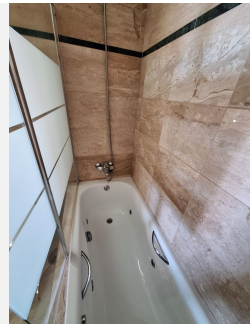
A Puerto Duquesa se llega en 10 minutos y a Estepona en 15. Al aeropuerto de Malaga se tarda mas de una hora, dependiendo de la autovia se puede llegar en 1 hora y al aeropuerto de Gibraltar en 40 minutos.



+34 952 939 460 - info@bromleyestatesmarbella.com - Urbanizacion El Rosario, CN340, Km 188, Marbella, Malaga 29603

BROMLEY ESTATES

Marbella



BROMLEY ESTATES

Marbella

