

BROMLEY ESTATES

Marbella



PENTHOUSE DUPLEX 3 BEDROOMS 3 BATHROOMS IN NEW GOLDEN MILE

📍 New Golden Mile

REF# BEMR4728454 €1,974,999

BEDS

3

BATHS

3

BUILT

200 m²

TERRACE

81 m²

Wonderful duplex penthouse set in one of the most luxurious frontline beach complexes on the Costa del Sol. The elite beachfront development situated on Estepona's New Golden Mile. Situated in a privileged position the stunning views of the Mediterranean Sea and Gibraltar mountain range encompass this desirable community.

Urbanisation is renowned for its five-star facilities such as 24-hour security, two outdoor swimming pools, a heated indoor swimming pool, gym, a sauna and is conveniently located with direct access to the beach.

This magnificent complex is in the area of Guadalmanza, which is a short distance from Estepona, Puerto Banus and Marbella. It is only 45 minutes away from Malaga International Airport through access to AP 7 and is very close to all amenities, shops, schools, high class restaurants, the newly build Laguna Villa complex.

+34 952 939 460 · info@bromleyestatesmarbella.com Urbanizacion El Rosario, CN340, Km 188, Marbella, Malaga 29603

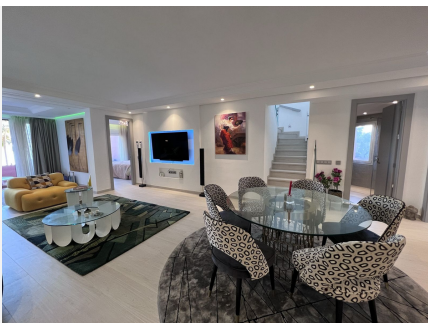
BROMLEY ESTATES

Marbella

The elegant 3- bedroom, 3- bathroom penthouse apartment is south facing and has views to the garden as well as out to the sea and has been completely remodelled to the highest standards and is a unique opportunity to own a luxurious beachfront apartment. The spacious terraces of the apartment provide ample opportunity to bask in the sun throughout the day while enjoying breathtaking views of the sea and cooking up a barbecue.

This penthouse has many luxurious features. Including Italian ceramics with the best faucets, toilets with smart mechanisms, Jacuzzi, New electrical system, New standard insulated windows that reduce energy consumption, Rooms with custom closets and modern open kitchen with German appliances and finally with unique furniture and luxurious features, this apartment offers an exceptional living experience with two separate parking spaces and two storage rooms.

This particular duplex penthouse comprises separate spaces with separate documents, such as apartment, along with 2 parking and 2 storages, totalling 322 square meters.



BROMLEY ESTATES

Marbella



BROMLEY ESTATES

Marbella



BROMLEY ESTATES

Marbella

