

# BROMLEY ESTATES

*Marbella*



## TOWNHOUSE 5 BEDROOMS 4 BATHROOMS IN BEL AIR

📍 Bel Air

REF# BEMR4728727 €750,000

BEDS

5

BATHS

4

BUILT

368 m<sup>2</sup>

TERRACE

54 m<sup>2</sup>

Beautiful double townhouse (218 sqm & 150 sqm) that can be used as one house with 5 bedrooms/4 bath or separately. The property is located in a nice and quiet urbanisation with green surroundings. The living rooms are attached with doors, but the wall could be closed again and make it 2 separate houses, one with 3 beds/2 bath and the other one with 2 beds/2 bath. The corner house has a garage included, that could fit 2 cars. The other house has a storage room, which could be easily made into a gym or playroom. The kitchen of one of the houses is now in use as an office, but can easily be transformed into a kitchen again or maybe even a small extra bedroom. Both houses have got a roof terrace with amazing views and seaview. There is a big sunny garden next to both houses with a lot of privacy. And a community pool and community garden just a few steps away from the house. The house comes with the furniture and is ready to move in.

# BROMLEY ESTATES

*Marbella*



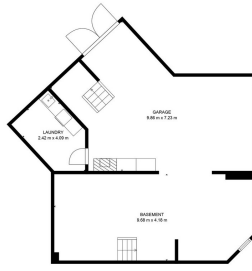
# BROMLEY ESTATES

*Marbella*



# BROMLEY ESTATES

*Marbella*



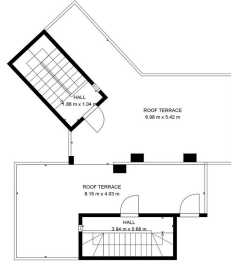
TOTAL 95.14 m<sup>2</sup>  
 UNDER 2000 - 48 m<sup>2</sup>, PLAIN - 1.00 m<sup>2</sup>, TERRACE - 1.00 m<sup>2</sup>, BALCONY - 1.00 m<sup>2</sup>,  
 EQUIPMENT FOR GARAGE - 1.00 m<sup>2</sup>, TERRACE - 1.00 m<sup>2</sup>, GARDEN - 17.14 m<sup>2</sup>,  
 UTILITY - 1.00 m<sup>2</sup>, ROOF TERRACE - 17.14 m<sup>2</sup>



TOTAL 95.14 m<sup>2</sup>  
 UNDER 2000 - 48 m<sup>2</sup>, PLAIN - 1.00 m<sup>2</sup>, TERRACE - 1.00 m<sup>2</sup>, BALCONY - 1.00 m<sup>2</sup>,  
 EQUIPMENT FOR GARAGE - 1.00 m<sup>2</sup>, TERRACE - 1.00 m<sup>2</sup>, GARDEN - 17.14 m<sup>2</sup>,  
 UTILITY - 1.00 m<sup>2</sup>, ROOF TERRACE - 17.14 m<sup>2</sup>



TOTAL 95.14 m<sup>2</sup>  
 UNDER 2000 - 48 m<sup>2</sup>, PLAIN - 1.00 m<sup>2</sup>, TERRACE - 1.00 m<sup>2</sup>, BALCONY - 1.00 m<sup>2</sup>,  
 EQUIPMENT FOR GARAGE - 1.00 m<sup>2</sup>, TERRACE - 1.00 m<sup>2</sup>, GARDEN - 17.14 m<sup>2</sup>,  
 UTILITY - 1.00 m<sup>2</sup>, ROOF TERRACE - 17.14 m<sup>2</sup>



TOTAL 95.14 m<sup>2</sup>  
 UNDER 2000 - 48 m<sup>2</sup>, PLAIN - 1.00 m<sup>2</sup>, TERRACE - 1.00 m<sup>2</sup>, BALCONY - 1.00 m<sup>2</sup>,  
 EQUIPMENT FOR GARAGE - 1.00 m<sup>2</sup>, TERRACE - 1.00 m<sup>2</sup>, GARDEN - 17.14 m<sup>2</sup>,  
 UTILITY - 1.00 m<sup>2</sup>, ROOF TERRACE - 17.14 m<sup>2</sup>