

# BROMLEY ESTATES

*Marbella.*



## PENTHOUSE 3 BEDROOMS 2 BATHROOMS IN NUEVA ANDALUCIA

📍 Nueva Andalucia

REF# BEMR4741099 €485,000

BEDS

3

BATHS

2

BUILT

110 m<sup>2</sup>

TERRACE

95 m<sup>2</sup>

Marvellous penthouse with private rooftop terrace with kitchen which also benefits from a parking space is basement.

The apartment elegantly decorated, has 3 bedrooms and 2 bathrooms and is located in Pueblo Las Brisas, Nueva Andalucia. Large living room with fireplace with adjoining dining room. Independent refurbished new kitchen with built-in bench. The master bedroom has ensuite bathroom and direct access to the terrace. The other two bedrooms share a bathroom. On the second floor there is the large and sunny solarium with built-in benches, built-in barbecue area and a pergola. Includes a parking space (24,13 sqm)

Pueblo Las Brisas is a low density community with blocks of two stories, the 30 apartments are built in the traditional Spanish style. The development was completed in 2000 and mainly occupied an enrich mix of nationalities from all over Europe. Well kept community, surrounded by beautiful landscaped swimming pools and gardens. There is a tennis court in the complex nextdoor that can be used by agreement.

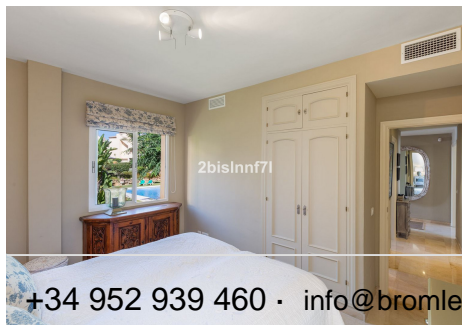
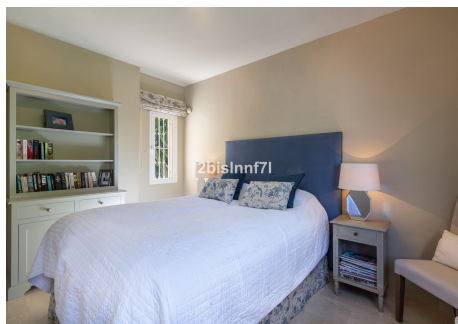
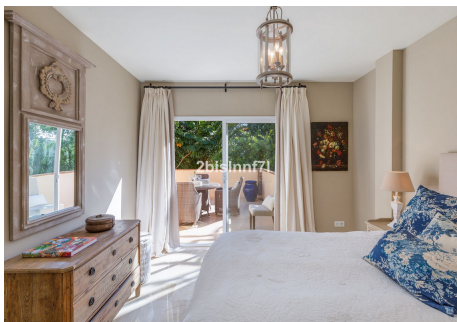
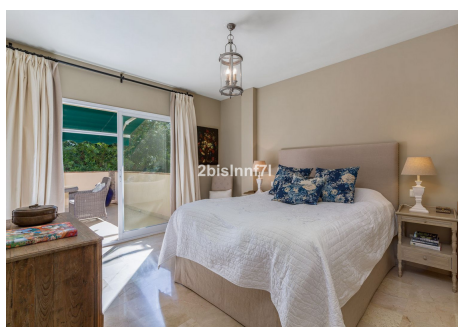
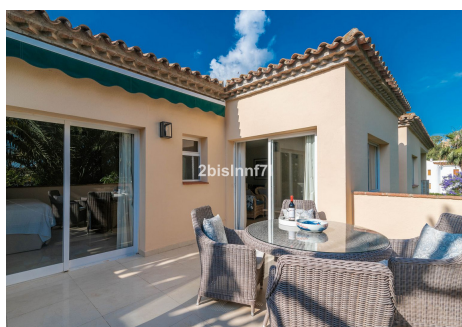
+34 952 939 460 · info@bromleyestatesmarbella.com Urbanizacion El Rosario, CN340, Km 188, Marbella, Malaga 29603

# BROMLEY ESTATES

*Marbella*

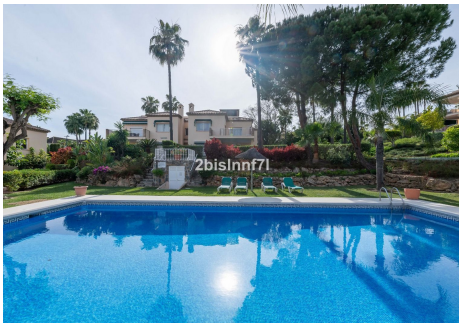
The furniture is sold separately for 7.000€ and it includes a new dishwasher.

Situated in the heart of Golf Valley, close to Las Brisas, Aloha and Los Naranjos golf courses, it is an ideal place to live and explore the rich culture of Andalucía. There are several restaurants nearby including those in the local golf clubs of Las Brisas, Los Naranjos and Aloha which hosts a music and dance evening on Friday nights that is well worth a visit. There are three local supermarkets within a 10 minute drive of the Community and the Supersol in Centro Plaza It is only ten minutes to the famous Puerto Banus, with its exciting mix of shops, bars and restaurants, but also benefits from excellent road connections further afield to Malaga, Granada, Cadiz and even the ski slopes of the Sierra Nevada.



# BROMLEY ESTATES

*Marbella*



# BROMLEY ESTATES

*Marbella*

