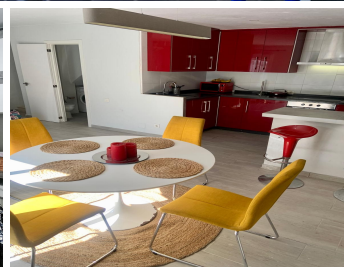
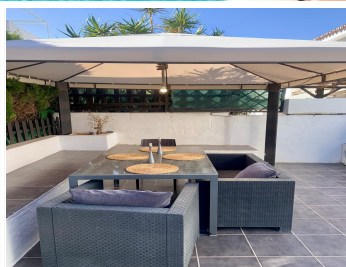
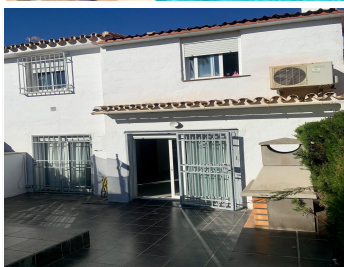


# BROMLEY ESTATES

*Marbella*



## SEMI-DETACHED HOUSE 2 BEDROOMS 2 BATHROOMS IN ESTEPONA

📍 Estepona

REF# BEMR4743682 €250,000

BEDS

2

BATHS

2

BUILT

79 m<sup>2</sup>

PLOT

50 m<sup>2</sup>

TERRACE

50 m<sup>2</sup>

Beautiful townhouse in the Monte Biarritz area next to Diana Park with a big private yard in a wonderful urbanisation with a big community pool and garden.

The entry yard has a barbecue and place enough for a big dining table for a whole family and storage for surf boats, golf equipment etc. You enter in the groundfloor in a spacious refurbished living room with an open kitchen very modernised and colourful. At the ground floor you have one bathroom, a storage and the living room with the kitchen and going upstairs you have the main double bedroom, one bathroom and the other single bedroom and all with a very charming attic walls making it feel very cozy. You will have 1 parking place with the townhouse.

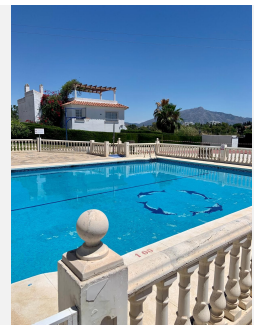
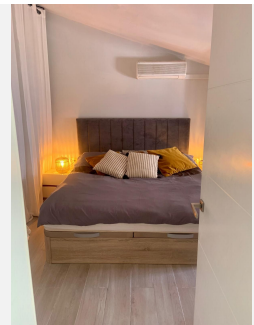
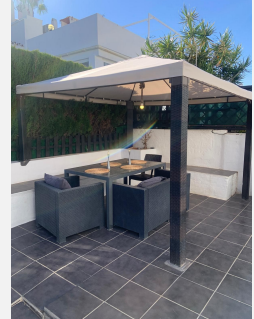
The area is very popular as you are at a walking distance to all amenities, shops and restaurants of Diana Park and even you could cross the highway walking to the beach of Isdabe./Atalaya, or you drive there within 5 minutes to the beach of Saladillo at 2 km or to the beach of San Pedro Alcántara with excellent restaurants on the promenade and walking distance to Puerto Banús.

You would drive 25 minutes to Marbella, 5 minutes to Puerto Banús and 1 hour more or less to the airport of  
+34 952 939 460 · info@bromleyestatesmarbella.com Urbanización El Rosario, CN340, Km 188, Marbella,  
Malaga 29603

# BROMLEY ESTATES

*Marbella*

Malaga.



+34 952 939 460 · [info@bromleyestatesmarbella.com](mailto:info@bromleyestatesmarbella.com) · Urbanizacion El Rosario, CN340, Km 188, Marbella, Malaga 29603

# BROMLEY ESTATES

*Marbella*

