

BROMLEY ESTATES

Marbella



GROUND FLOOR APARTMENT 2 BEDROOMS 2 BATHROOMS IN ISTAN

 **Istan**

REF# BEMR4744492 **€440,500**

BEDS

2

BATHS

2

BUILT

130 m²

PLOT

90 m²

TERRACE

30 m²

This ground floor apartment Sierra Blanca Country Club offers a perfect escape from the hustle and bustle of the city while still providing quick access to all amenities. With its fully furnished and equipped interiors, this property is ready for you to move in and start enjoying a comfortable lifestyle.

One of the main highlights of this apartment is its large garden, which includes a 33m² terrace and a 90m² private garden. With panoramic windows in every room and direct access to the terrace and garden, you can enjoy the beautiful views of the sea, the coast of Morocco and Gibraltar, the mountains, and the bay of Marbella.

The apartment features a spacious living room with an open kitchen with island, dining area, 2 bathrooms, and 2 bedrooms with built-in wardrobes. There is a storage room for extra space and underground parking included in the price. The apartment is brand new and located in a gated community with a doorman for added security.

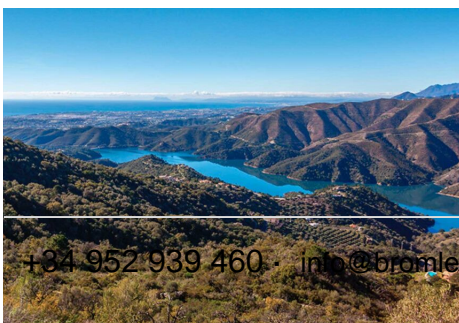
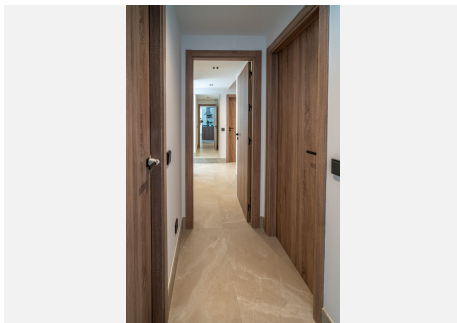
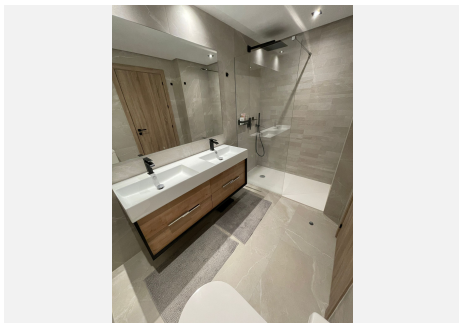
+34 952 939 460 · info@bromleyestatesmarbella.com Urbanizacion El Rosario, CN340, Km 188, Marbella, Malaga 29603

BROMLEY ESTATES

Marbella

In addition to the stunning views, this apartment also offers a range of desirable features. These include arothermal water heating, air conditioning, double glazing, electric blinds, and porcelain floors. Other amenities include a communal pool, mature gardens, and a lift for easy access. For those with electric cars, the apartment comes with a large garage space that includes an EV charging station.

The location of this property is ideal, as it is close to international schools, tennis and paddle tennis clubs, golf courses, shopping centers, and the vibrant Puerto Banus. The beautiful beaches and famous restaurants of the Golden Mile are also within easy reach. Sierra Blanca Country Club is a secluded enclave set atop the foothills of La Concha Mountain, only 7km away from the vibrant pulse of Marbella and this refined gated haven offers an authentic rural ambiance, coupled with breathtaking panoramic vistas.



BROMLEY ESTATES

Marbella

