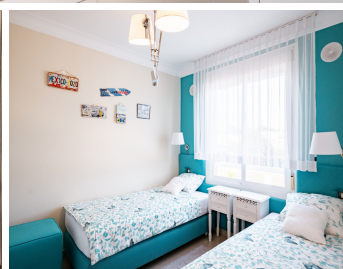


BROMLEY ESTATES

Marbella



PENTHOUSE 2 BEDROOMS 2.5 BATHROOMS IN ESTEPONA

📍 Estepona

REF# BEMR4754338 €525,000

BEDS

2

BATHS

2.5

BUILT

176 m²

TERRACE

94 m²

Nestled within the confines of this superb urbanization, this 2 bedroom duplex penthouse looks proudly out across the surrounding mountain ranges that hug Estepona, and over the sublime swimming pool that languishes within the carefully tended community gardens.

This property has been cleverly designed to allow maximum light into each living space, allowing natural illumination to shine in and accentuate every corner. There are 2 spacious bedrooms, one on each floor, and both enjoying the privacy of its own bathroom ensuite. The master suite, located on the upper floor, is expansive and tastefully dressed in a stunning neutral palette, creating a sense of calm and tranquility. The bathroom is deluxe, chic and offers a Jacuzzi bathtub to relax in after a hard day. Fully fitted wardrobes offer a plethora of storage and cupboard space.

The living area is captivating and brightly lit through extensive windows and sits adjacent to the open plan styled kitchen, which offers a breakfast bar and bar stools for convenience. The dining area sits alongside

+34 952 939 460 · info@bromleyestatesmarbella.com Urbanizacion El Rosario, CN340, Km 188, Marbella, Malaga 29603

BROMLEY ESTATES

Marbella

the kitchen and is bright and airy , enjoying direct access out onto a vast terrace.

The terrace is private, sunny and offers both covered and uncovered areas to lounge in. The views draw your gaze out across the gardens and over to the immense swimming pool in the grounds below. This terrace offers an outdoor kitchenette and is the perfect area to entertain family and friends on lazy summer evenings.

The property, to be sold fully furnished, is completed by a private parking space along with a storage unit, both in the communal garage. This is an opportunity not to be missed, and gems such as this are a rare find in this impressive immaculately maintained urbanization.



BROMLEY ESTATES

Marbella

