

BROMLEY ESTATES

Marbella



PENTHOUSE DUPLEX 4 BEDROOMS 4 BATHROOMS IN ESTEPONA

📍 Estepona

REF# BEMR4761814 €2,190,000

BEDS

4

BATHS

4

BUILT

168 m²

PLOT

12300 m²

TERRACE

120 m²

The property is located on the 3rd Level of a condominium known as Bahia de Velerin. It consists of two levels: the apartment level and the panorama wellness roof terrace.

The building is equipped with elevator operating from the parking level to the property exclusively.

There are 4 bedrooms (Guest, Golden, Black and Panorama Leisure) with 4 bathroomse. The entrance hall, living room, kitchen, dining area and panorama balcony with external stair to the roof terrace are located on the apartment level. The panorama wellness roof terrace (with jacuzzi, sauna and BBQ) has an open area and a fully glazed panorama leisure room equipped with design shower and toilette. There is a unique internal “floating stair” with automatic glazed openable slab built between the apartment and the roof level.

The architectural style of the apartment is modern, but on the roof terrace, as it is partly open, the existing “South Mediterranean – Andalusian – North African” design was followed.

Underground lockable storage and private parking with own electric car-charging station also belong to the property.

The condominium has a fully maintained tropical garden with a lake, private swimming pool with a pool bar
+34 952 939 460 · info@bromleyestatesmarbella.com Urbanizacion El Rosario, CN340, Km 188, Marbella, Malaga 29603

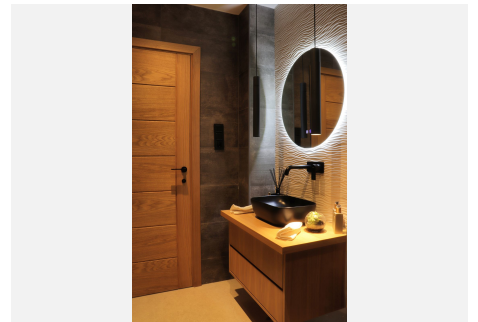
BROMLEY ESTATES

Marbella.

and direct access to the beach.

Equipment: security systems with security camera, Airconditioner, Electric floor heating, fully equipped kitchen, Dolby Atmos HIFI system, TV in all rooms, WIFI Hot-Spot System 5g.

Used brands: Bose, Sony, Samsung, Miele, Neff, Bosch, Villeroy&Boch, Laufen, Grohe.



BROMLEY ESTATES

Marbella

