

# BROMLEY ESTATES

*Marbella*



## PENTHOUSE 3 BEDROOMS 3.5 BATHROOMS IN GUADALMINA ALTA

📍 Guadalmina Alta

REF# BEMR4767247 €649,000

BEDS

3

BATHS

3.5

BUILT

185 m<sup>2</sup>

TERRACE

48 m<sup>2</sup>

This stunning duplex penthouse, located in the highly sought-after area of Guadalmina Alta, San Pedro de Alcántara, offers an unparalleled living experience. With a spacious built area of 185m<sup>2</sup> and an additional 48m<sup>2</sup> terrace, this property boasts three bedrooms and three bathrooms, along with a guest toilet. The penthouse is ideally positioned front line to the golf course, providing breathtaking open views of the golf greens and the shimmering sea. Its southwest orientation ensures ample natural light throughout the day, enhancing the already vibrant atmosphere of this elegant home.

The property is designed with comfort and convenience in mind, featuring a communal pool and garden, perfect for relaxation and leisure. The penthouse also includes a private garage with two underground parking spaces and two storage rooms, ensuring ample space for all your needs. Residents benefit from a range of modern amenities, such as air conditioning, marble floors, satellite TV, and high-speed fibre optic internet. The security of the property is paramount, with a secure entrance, 24-hour security service, surveillance cameras, and an armoured door, providing peace of mind for all occupants.

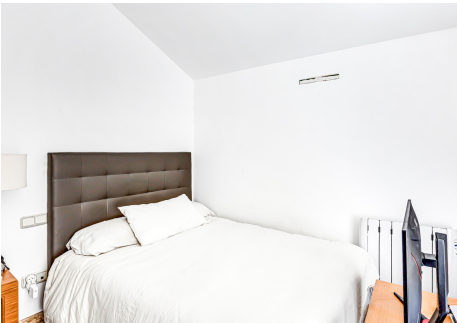
+34 952 939 460 · [info@bromleyestatesmarbella.com](mailto:info@bromleyestatesmarbella.com) Urbanizacion El Rosario, CN340, Km 188, Marbella, Malaga 29603

# BROMLEY ESTATES

*Marbella*

Inside, the duplex penthouse offers a well-thought-out layout. The lower level comprises an en suite bedroom, an open kitchen, a living room, a dining area, and a utility room. The spacious terrace on this level is perfect for outdoor dining and entertaining, offering panoramic views of the garden, pool, and surrounding countryside. The upper level houses two additional en suite guest rooms both with their own terraces, providing privacy and comfort for family and visitors alike. Double glazing and fitted wardrobes are just some of the additional features that enhance the living experience.

The location of this property is second to none, with easy access to the town centre of San Pedro de Alcántara, shops, restaurants, schools, and various other amenities. The proximity to the beach and golf courses adds to the appeal of this duplex penthouse, making it an ideal choice for those seeking a luxurious and convenient lifestyle in one of the most prestigious areas of Malaga. Optional furniture is available, allowing for a seamless move-in experience.



# BROMLEY ESTATES

*Marbella*

