

BROMLEY ESTATES

Marbella



PENTHOUSE 4 BEDROOMS 3 BATHROOMS IN CALAHONDA

📍 Calahonda

REF# BEMR4775854 €500,000

BEDS

4

BATHS

3

BUILT

180 m²

TERRACE

20 m²

This impressive duplex penthouse in Calahonda, located on the coveted Costa del Sol, is a gem that combines a privileged location with great renovation potential. With its 180 m² built area, this spacious and bright 4-bedroom, 3-bathroom apartment offers a unique opportunity to create a dream home by the sea.

Located just steps from the beach, this penthouse enjoys an enviable position. Its south-southwest orientation ensures that the interior spaces are bathed in natural light throughout the day, while its sea views offer a spectacular panorama that can be enjoyed from multiple points of the home. The proximity to shops, schools, public transport and the marina make this property an ideal choice for those seeking comfort and quality of life in a coastal environment.

The penthouse has a private terrace perfect for relaxing or enjoying outdoor dinners, while contemplating the blue of the Mediterranean. In addition, the property is part of a gated complex that offers security and tranquility, as well as access to a beautiful community garden and a swimming pool, ideal for enjoying the

+34 952 939 460 · info@bromleyestatesmarbella.com Urbanizacion El Rosario, CN340, Km 188, Marbella, Malaga 29603

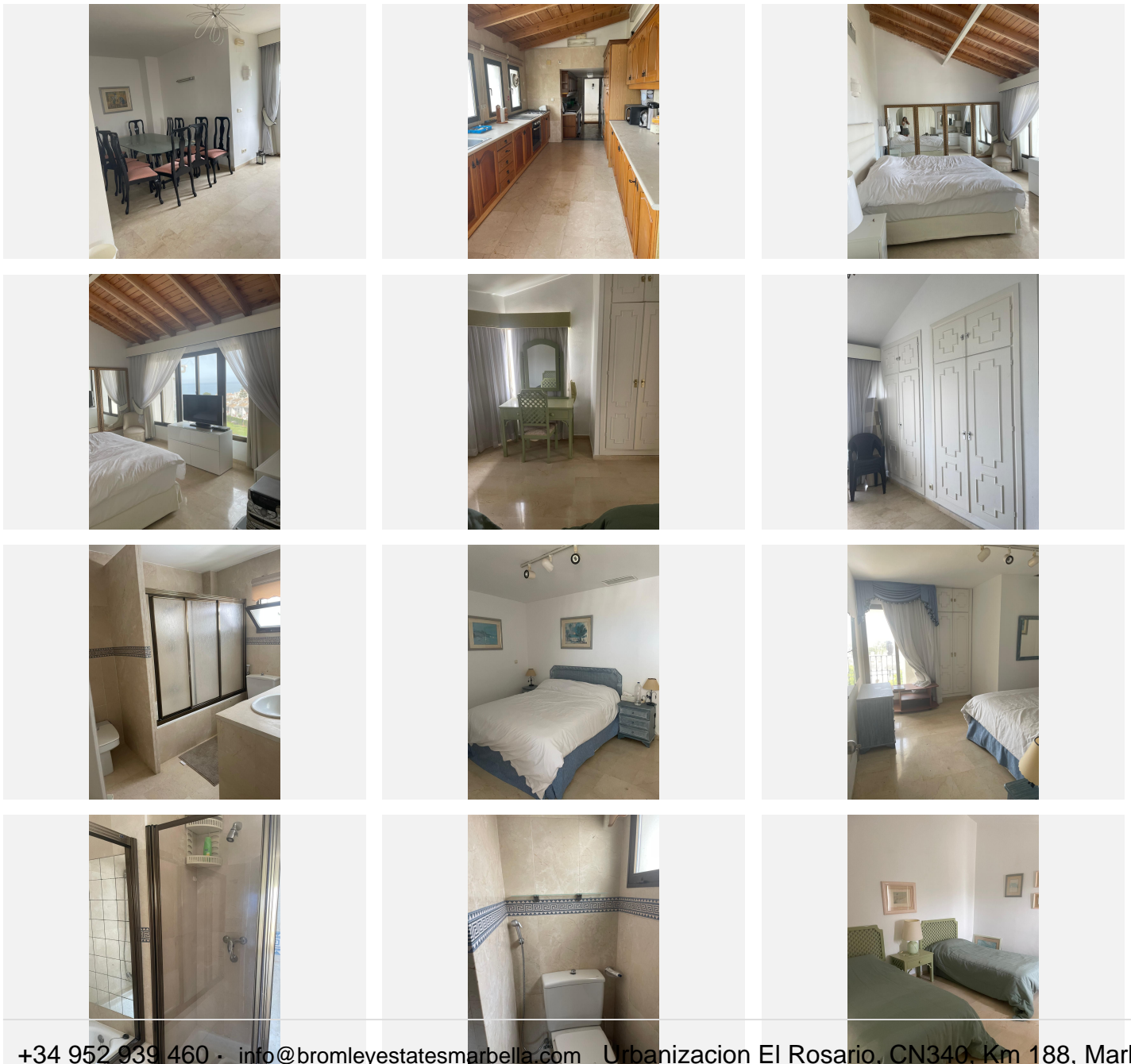
BROMLEY ESTATES

Marbella

sunny climate of the Costa del Sol.

A fitted kitchen and en-suite bathrooms in the main bedrooms provide convenience, although the property is unfurnished, offering the freedom to customize each space to personal tastes. This duplex penthouse is an unparalleled opportunity to carry out a comprehensive renovation and transform the space into a luxurious retreat by the sea.

In short, this duplex penthouse in Calahonda offers a perfect combination of location, views and potential to become an exclusive property, tailor-made to enjoy the Mediterranean lifestyle at its finest.



BROMLEY ESTATES

Marbella

