

# BROMLEY ESTATES

*Marbella*



## MIDDLE FLOOR APARTMENT 2 BEDROOMS 1 BATHROOM IN BENALMADENA

📍 Benalmadena

REF# BEMR4776091 €245,000

BEDS

2

BATHS

1

BUILT

85 m<sup>2</sup>

Exclusive Apartment in Parque de la Paloma, Benalmádena

Discover this charming apartment located in the desirable Parque de la Paloma area in Benalmádena. Known for its wonderful weather year-round, this property is perfect for both living and investment purposes.

Property Features:

- Size: 78 m<sup>2</sup> apartment
- Bedrooms: 2 comfortable bedrooms
- Bathroom: 1 modern bathroom
- Floor: 6th floor with elevator
- Terrace: Enjoy a lovely terrace with views overlooking the mountains and the community pool area

+34 952 939 460 · info@bromleyestatesmarbella.com Urbanizacion El Rosario, CN340, Km 188, Marbella, Malaga 29603

# BROMLEY ESTATES

*Marbella*

## Community Amenities:

- Shared Pool: Take a dip in the community pool, perfect for relaxing and socializing
- Garden Area: Beautiful garden area with mountain views, ideal for outdoor enjoyment
- Tennis Court: Stay active with access to the community tennis court
- Barbecue Area: Host gatherings in the dedicated barbecue area
- Night Security: Peace of mind with night security ensuring safety

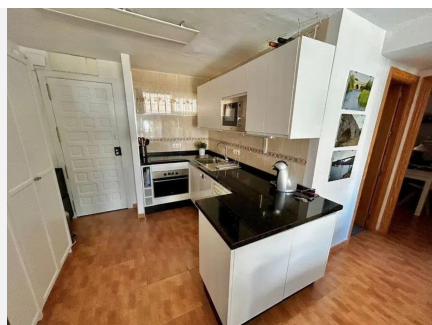
## Location and Accessibility:

- Unbeatable location, only 400m or a 6-minute walk to the beach
- Located in the serene Parque de la Paloma area, offering excellent year-round weather

## Investment Potential:

- Ideal for Living: Perfect for a comfortable and enjoyable lifestyle
- Rental Opportunity: Excellent investment potential as a short-term rental property

This exclusive apartment offers a unique opportunity to enjoy a comfortable and luxurious lifestyle in one of Benalmádena's most sought-after locations. With its spacious layout, fantastic views, and top-notch community amenities, this property is ideal for both permanent residence and investment purposes. Contact us today for more information and to schedule a viewing.



# BROMLEY ESTATES

*Marbella*

