



TOWNHOUSE 3 BEDROOMS 4 BATHROOMS IN NUEVA ANDALUCIA

📍 Nueva Andalucia

REF# BEMR4780786 €885,000

BEDS	BATHS	BUILT	PLOT	TERRACE
3	4	421 m ²	421 m ²	180 m ²

Discover this charming Townhouse in Puerto Banus, Marbella. Spanning four floors, this property blends modern design with Mediterranean style, offering three bedrooms, four en-suit bathrooms, With a total built area of 421 sq. m and an additional 180 sq. m terrace, this home provides ample space for comfortable living. Facing east, it enjoys beautiful morning sun and The back Of the property Faces West for afternoon sun and Beautiful Sunsets making it a peaceful retreat in the lively heart of Marbella.

Overview

This Unique Townhouse in Nueva Andalucia , Marbella, offers a perfect mix of comfort and style. With spacious interiors and beautiful outdoor spaces, including a private garden and access to a communal pool, it's a wonderful place to live.

Interior

+34 952 939 460 · info@bromleyestatesmarbella.com Urbanizacion El Rosario, CN340, Km 188, Marbella, Malaga 29603

BROMLEY ESTATES

Marbella.

Inside, the townhouse features three comfortable bedrooms, providing plenty of space for family and guests. The master bedroom has an en-suite bathroom and a private balcony overlooking lush communal gardens. The four bathrooms are well-appointed and add to the home's convenience. The closed-plan layout ensures a smooth flow between the living areas, creating a cozy and inviting atmosphere. The east-facing orientation fills the home with natural light, enhancing its warm and friendly feel. With a total built area of 421 sq. m across four floors, there's ample room for everyone.

Exterior

The exterior of the property is just as inviting, with a well-maintained private garden area.

The main bedrooms have balconies that offer peaceful views of the surrounding greenery, ideal for relaxing with a morning coffee or an evening drink. The spacious 180 sq. m terrace is a great spot for outdoor dining or lounging. Residents can also enjoy the communal pool, providing a refreshing escape during the warmer months. This townhouse combines indoor and outdoor living seamlessly, offering a comfortable space for both relaxation and socializing. The property also includes a secure Private Underground garage for two cars, and a storage unit adding to its convenience.

Location

Situated in the desirable Nueva Andalucia Area (Puerto Banus) this property offers a fantastic lifestyle. Puerto Banus is famous for its vibrant marina, high-end shops, and lively nightlife. Residents have easy access to beautiful beaches, excellent dining options, and unique shopping experiences.

This is the perfect location also for non drivers or if you want to enjoy cocktails and not take the car as close to the property there are 3 bus stops that go to Puerto Banus San Pedro and Marbella centre.

Marbella itself is a hub of cultural and social activities, from beachfront clubs to fine restaurants. With good schools and efficient transport links, it's an ideal location for families. Marbella's rich history and cultural charm add to its appeal, making it a great place to live.

Airports

Malaga Airport is the closest to Marbella, offering excellent local and international connections. With flights to major cities across Europe and beyond, traveling is convenient. Whether for business trips or leisure, residents can easily explore new destinations or enjoy quick weekend getaways.

Golf Course

Marbella is a great spot for golf lovers, with some of the best golf courses in Spain. Nearby options include Marbella Club Golf Resort, Aloha Golf Club, and Los Naranjos Golf Club (views from the front terrace) each of the courses offering unique challenges and beautiful views.

The local area has plenty of golfing opportunities, perfect for both experienced players and beginners.

Explore this welcoming townhouse in Puerto Banus, Marbella. With its blend of comfort, style, and a prime location, it's a wonderful opportunity.

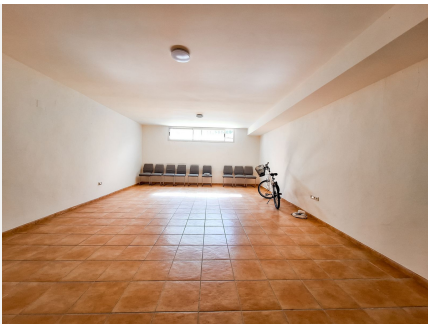
BROMLEY ESTATES

Marbella



BROMLEY ESTATES

Marbella



BROMLEY ESTATES

Marbella

