

BROMLEY ESTATES

Marbella



HOUSE 6 BEDROOMS 6.5 BATHROOMS IN BENAHAVIS

 Benahavis

REF# BEMR4782388 €2,900,000

BEDS

6

BATHS

6.5

BUILT

471 m²

PLOT

3250 m²

TERRACE

160 m²

Luxurious Sanctuary in Marbella

Nestled above our vibrant botanical gardens, the majestic Sierra de las Nieves mountains embrace our idyllic haven. This natural wonder shapes a unique microclimate in Marbella and Benahavis, offering over 320 sun-drenched days annually, making it one of Europe's sunniest destinations.

Exclusive Location

Marbella Club Hills, located in Benahavis, lies between the iconic Marbella Club Golf Resort and Anantara Villa Padierna Palace. Spanning an expansive 158,000 sqm, with only 5% dedicated to construction, this exclusive community preserves the pristine environment and offers residents breathtaking views.

Exquisite Villa

Bedrooms: 6

Bathrooms: 6.5

Built Area: 471 m²

+34 952 939 460 · info@bromleyestatesmarbella.com Urbanizacion El Rosario, CN340, Km 188, Marbella, Malaga 29603

BROMLEY ESTATES

Marbella

Terrace: 160 m²

Garden/Plot: 3250 m²

This frontline golf villa is positioned close to golf courses and urban amenities, oriented to the south, and in excellent condition.

Luxury Features

Private pool

Air Conditioning (Hot/Cold)

Fireplace

Stunning Views: Mountain, Golf, Panoramic, Garden, Pool

Covered Terrace

Fitted Wardrobes

Private Terrace

Utility Room

Ensuite Bathrooms

Marble Flooring

Double Glazing

Fully Fitted Kitchen

Private Garden

24 Hour Security

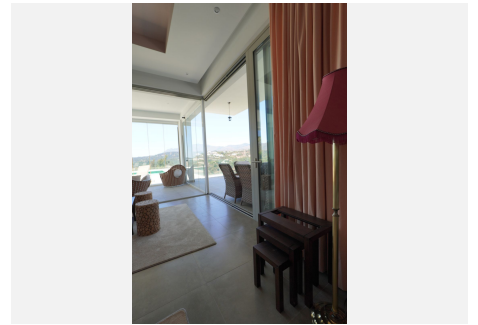
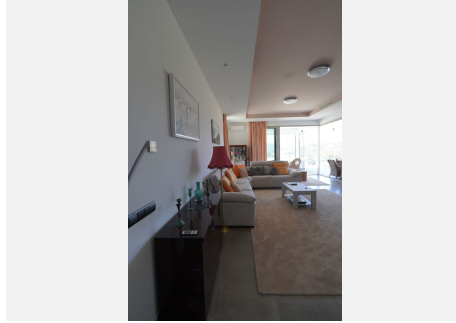
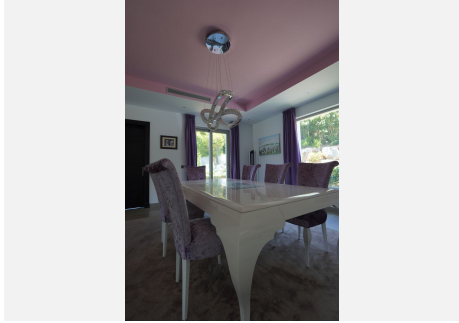
Private Garage

A short drive away from the vibrant Puerto Banús and Marbella, this property offers the perfect blend of luxury, comfort, and convenience.



BROMLEY ESTATES

Marbella



BROMLEY ESTATES

Marbella.



