

# BROMLEY ESTATES

*Marbella*



## GROUND FLOOR APARTMENT 2 BEDROOMS 2 BATHROOMS IN NUEVA ANDALUCIA

📍 Nueva Andalucia

REF# BEMR4782622 €650,000

BEDS

2

BATHS

2

BUILT

92 m<sup>2</sup>

TERRACE

42 m<sup>2</sup>

Become the privileged first resident of this recently completed brand-new apartment in Marbella.

Located on an elevated ground floor, this Key Ready 2-bedroom, 2-bathroom apartment enjoys views of the sea, mountains, and nearby lake. The price includes the convenience of an underground parking space and a storage room.

Situated on a picturesque hill, the development offers breathtaking vistas of the Viejo del Angel water reservoir, the Marbella coastline, and nearby golf courses, including Los Naranjos, Las Brisas, and Aloha. Nestled in the exclusive La Cerquilla area of Nueva Andalucia, this location is renowned for its tranquil streets, sophisticated atmosphere, and luxurious residences.

The communal areas are designed with a blend of “Boho Chic” and “Country Chic” aesthetics, integrating natural materials and colours to harmonise with the swimming pool area and the surrounding landscape.

+34 952 939 460 · [info@bromleyestatesmarbella.com](mailto:info@bromleyestatesmarbella.com) Urbanizacion El Rosario, CN340, Km 188, Marbella, Malaga 29603

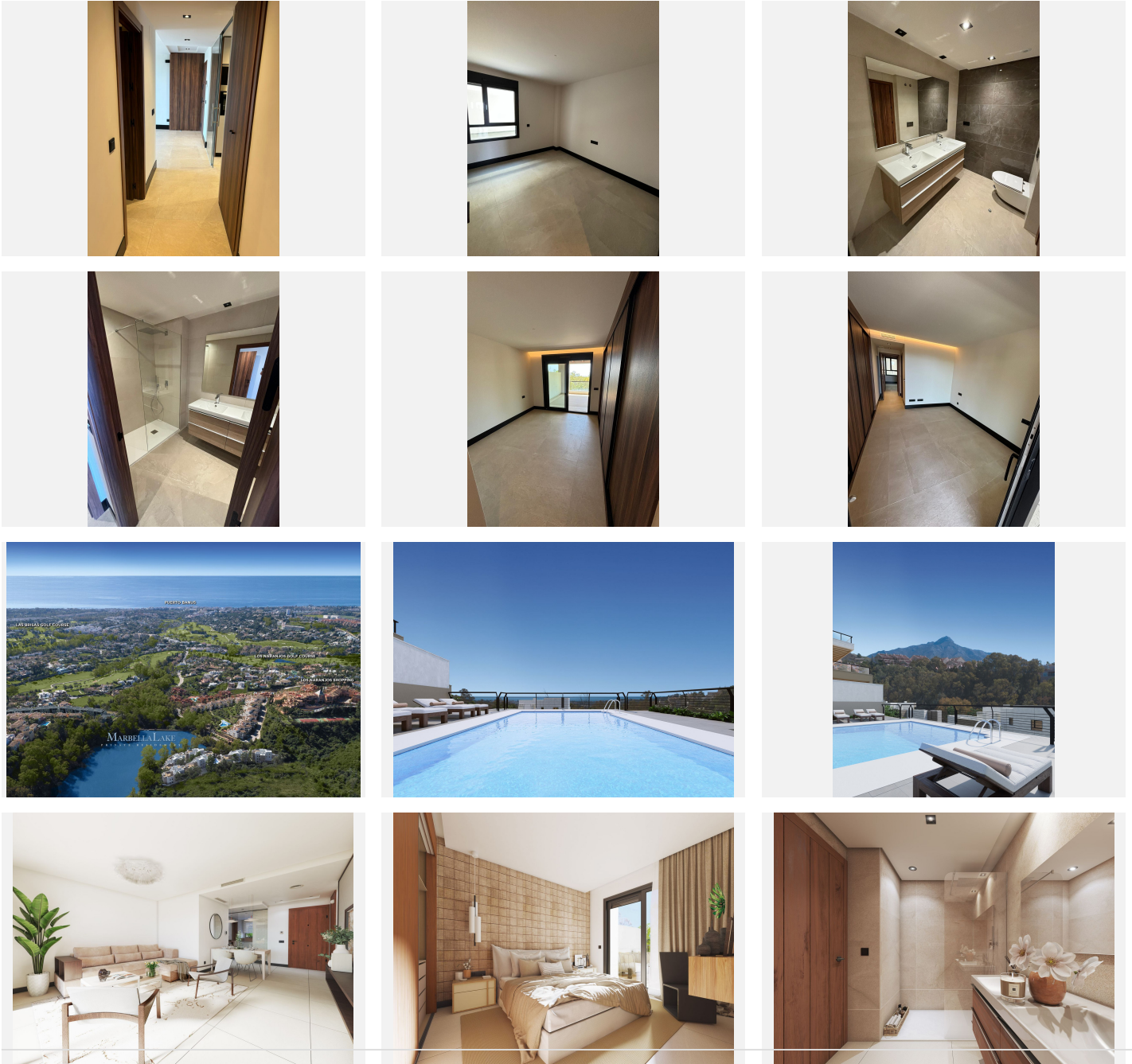
# BROMLEY ESTATES

*Marbella*

This design approach creates a serene and relaxing environment.

Strategically positioned between Marbella and San Pedro Alcantara, in the heart of Golf Valley, this community is just 5 kilometres from Puerto Banus. The area offers an array of dining options, from international cuisines to traditional dishes, along with numerous shops and essential amenities. Plus, it's conveniently located less than an hour's drive from Malaga airport, ensuring easy access for travel.

Ask us for a video of the property!



+34 952 939 460 · [info@bromleyestatesmarbella.com](mailto:info@bromleyestatesmarbella.com) Urbanizacion El Rosario, CN340, Km 188, Marbella, Malaga 29603

# BROMLEY ESTATES

*Marbella*

