



SEMI-DETACHED HOUSE 5 BEDROOMS 3.5 BATHROOMS IN THE GOLDEN MILE

📍 The Golden Mile

REF# R4782646 €1,600,000

BEDS

5

BATHS

3.5

BUILT

235 m²

PLOT

122 m²

TERRACE

55 m²

Live your best life in Marbella's Golden Mile

Just 100 meters from the world-famous Marbella Club Hotel and 400 meters from the beach, this Semi-Villa is situated in the heart of Marbella's luxurious Golden Mile. Step outside your door to indulge in the opulence of Puente Romano's Michelin-star restaurants, world-class tennis courts, and Marbella's sandy beaches.

Marbella's most renowned Michelin-starred seafood restaurant is just 50 meters away, with other Dani García establishments within walking distance. The villa is also conveniently located within a five-minute drive of Puerto Banus and Marbella's Old Town.

Nestled in a small community with expansive grounds, this three bedroom + bonus room, plus a self contained suite, Semi-Villa features a double-length swimming pool, a paddle court, and stunning views of both the sea to the south and La Concha mountain to the north. Inside, you'll find marble floors, central air

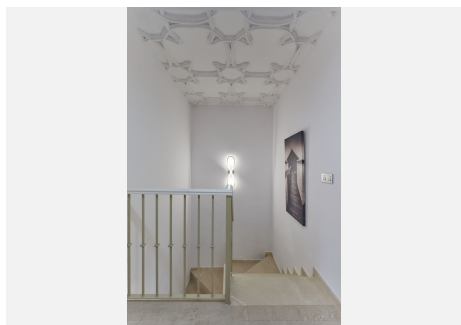
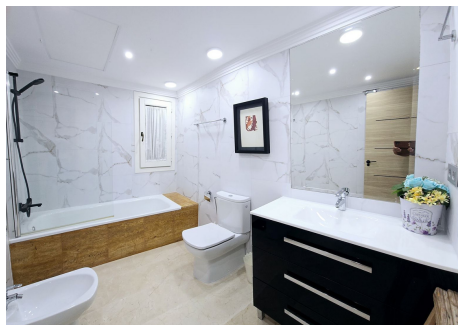
+34 952 939 460 · info@bromleyestatesmarbella.com Urbanizacion El Rosario, CN340, Km 188, Marbella, Malaga 29603

BROMLEY ESTATES

Marbella

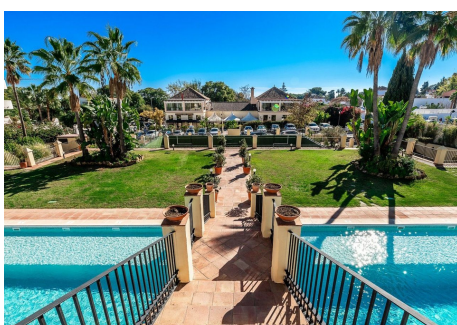
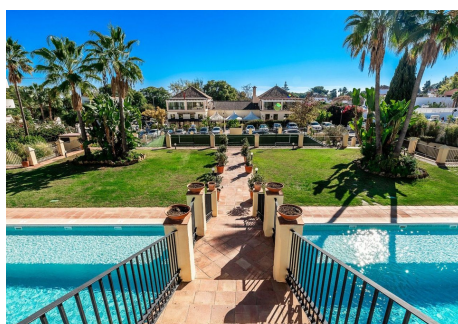
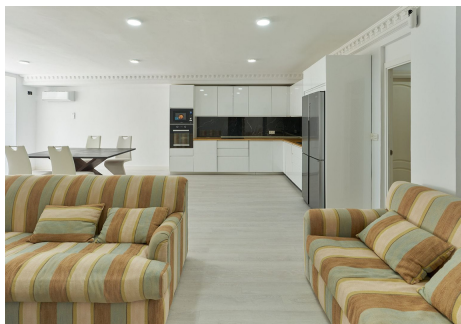
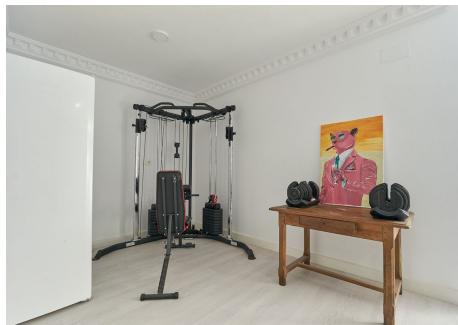
conditioning and heating, a high bar, and a terrace perfect for entertaining guests.

The property includes two underground parking spaces and a storage room. Golf enthusiasts will appreciate being within a ten-minute drive of three of Costa del Sol's best golf clubs: Aloha, Las Brisas, and Los Naranjos. Additionally, the British International School of Marbella is just four minutes away.

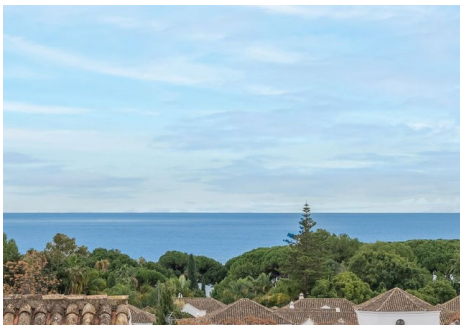


BROMLEY ESTATES

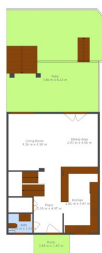
Marbella



BROMLEY ESTATES
Marbella



TOTAL: 229 m2
Below Ground: 91 m2, FLOOR 2: 67 m2, FLOOR 3: 67 m2
ENCLOSED AREAS: ENTRY: 61 m2, PORCH: 5 m2, BALCONY: 16 m2



TOTAL: 229 m2
Below Ground: 51 m2, FLOOR 2: 67 m2, FLOOR 3: 67 m2
EXCLUDED AREAS: PRYD: 61 m2, POKER: 5 m2, BALCONY: 16 m2



TOTAL: 229 m2
Below Ground: 91 m2, FLOOR 2: 67 m2, FLOOR 3: 67 m2
EXCLUDED AREAS: PRYSE: 61 m2, PORCH: 3 m2, BALCONY: 16 m2