



PENTHOUSE 2 BEDROOMS 2 BATHROOMS IN MANILVA

📍 Manilva

REF# BEMR4783228 €290,000

BEDS

2

BATHS

2

BUILT

100 m²

TERRACE

20 m²

In the south of the province of Málaga, just a few minutes from the superb Marina de Sotogrande, in the Bahía de las Rocas/La Paloma district.

This beautiful residential complex offers magnificent flower-filled gardens, a large swimming pool and, for sports enthusiasts, a paddle tennis court (with no noise disturbance).

The flat comprises a large entrance hall, a bright and spacious living room with access to a 20m² south-facing terrace offering breathtaking views of the surrounding countryside, the Mediterranean Sea and Gibraltar (view guaranteed), a semi-open, fully-fitted and furnished kitchen with a large adjoining utility room, two double bedrooms with large built-in wardrobes, and two full bathrooms, one of which (with shower and bath) is en-suite with the master bedroom with access to the terrace. .

The price includes an underground parking space for a large vehicle and a cellar (+/-5m²).

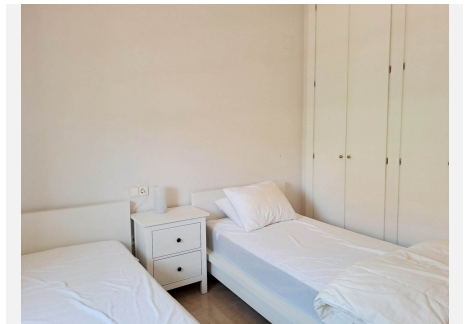
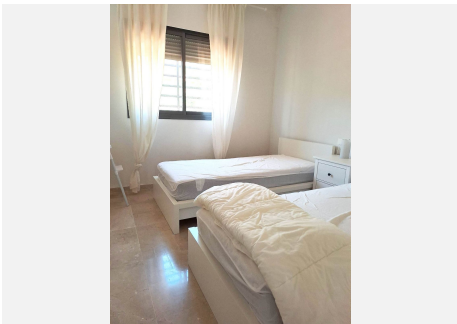
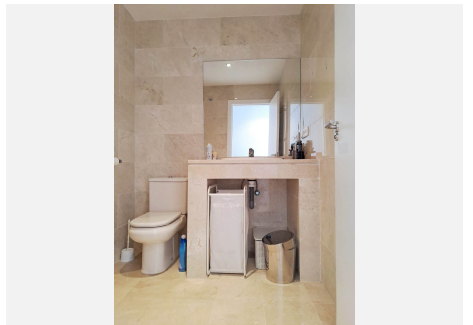
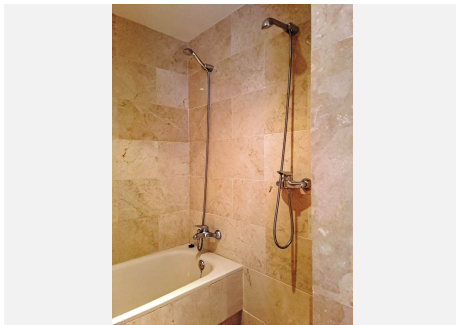
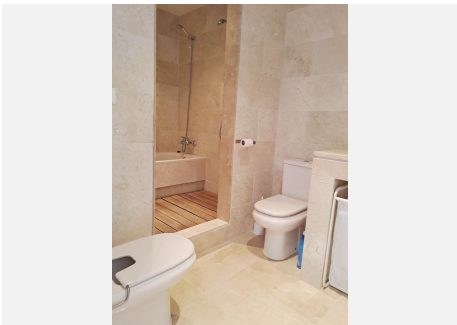
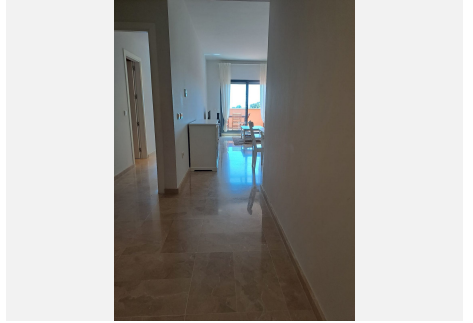
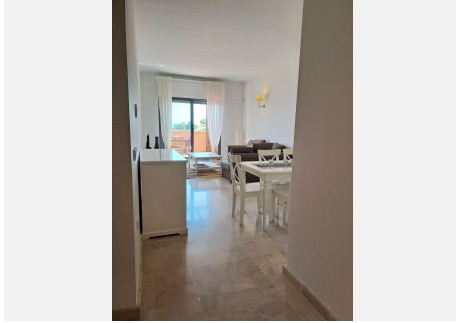
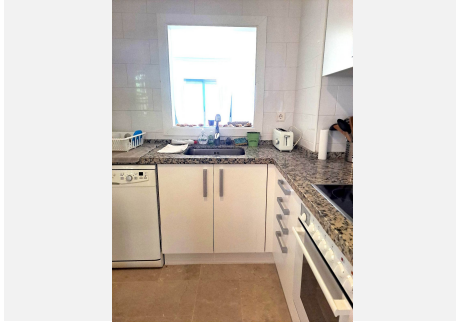
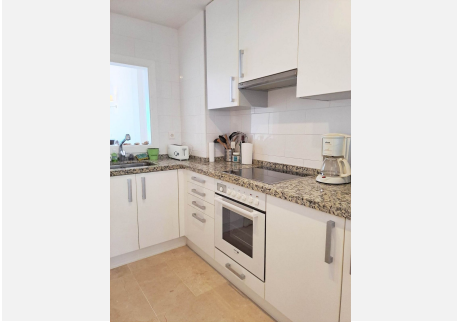
The property is sold furnished and equipped so that you can enjoy it as soon as you move in.

All that's required is a little freshening-up of the paintings and a few small items of decoration.

Don't hesitate to come and visit this little piece of paradise!

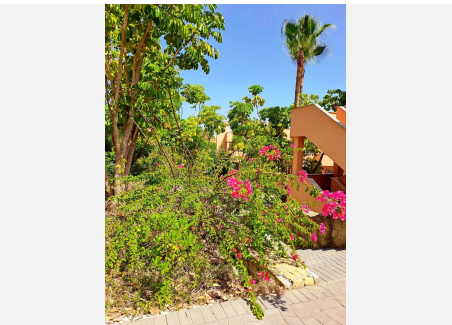
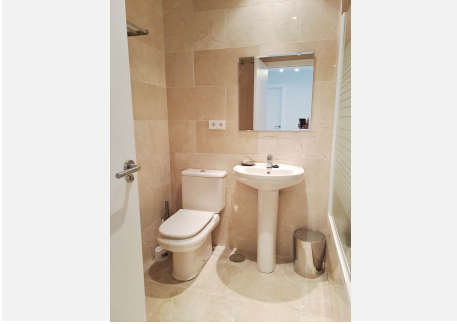
BROMLEY ESTATES

Marbella



BROMLEY ESTATES

Marbella



BROMLEY ESTATES

Marbella

