

# BROMLEY ESTATES

*Marbella*



## HOUSE 10 BEDROOMS 7 BATHROOMS IN THE GOLDEN MILE

📍 The Golden Mile

REF# BEMR4783900 €3,200,000

BEDS

10

BATHS

7

BUILT

470 m<sup>2</sup>

PLOT

122 m<sup>2</sup>

TERRACE

110 m<sup>2</sup>

Live your best life in Marbella's Golden Mile

Just 100 meters from the world-famous Marbella Club Hotel and 400 meters from the beach, this independent Villa is situated in the heart of Marbella's luxurious Golden Mile. Step outside your door to indulge in the opulence of Puente Romano's Michelin-star restaurants, world-class tennis courts, and Marbella's sandy beaches.

Marbella's most renowned Michelin-starred seafood restaurant is just 50 meters away, with other Dani García establishments within walking distance. The villa is also conveniently located within a five-minute drive of Puerto Banus and Marbella's Old Town.

Nestled in a small community with expansive grounds, this 8 bedroom + 2 bonus rooms, plus a self-contained suite, Villa features a double-length swimming pool, a paddle court, and stunning views of both the sea to the south and La Concha mountain to the north. Inside, you'll find marble floors, central air

+34 952 939 460 · info@bromleyestatesmarbella.com Urbanizacion El Rosario, CN340, Km 188, Marbella, Malaga 29603

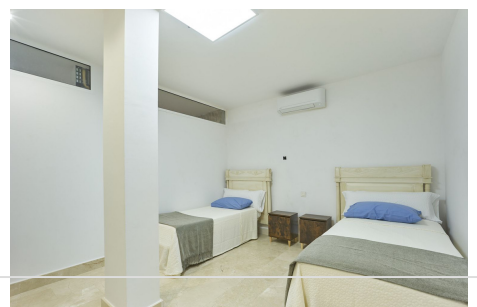
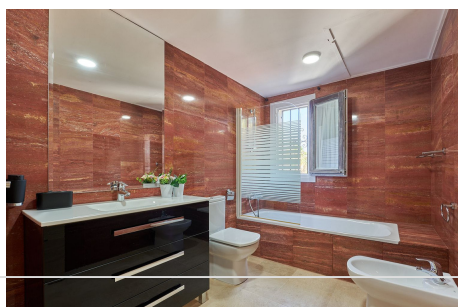
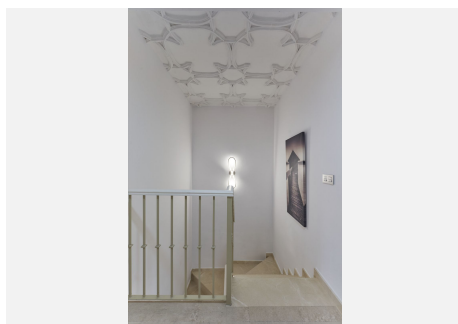
# BROMLEY ESTATES

*Marbella*

conditioning and heating, a high bar, and a terrace perfect for entertaining guests.

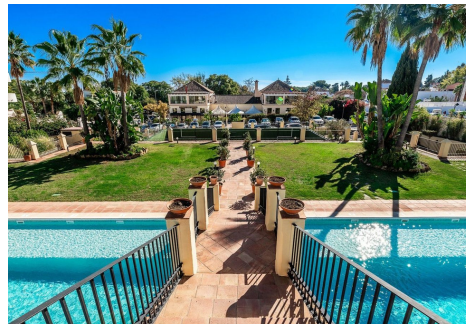
The property includes four underground parking spaces and two storage rooms. Golf enthusiasts will appreciate being within a ten-minute drive of three of Costa del Sol's best golf clubs: Aloha, Las Brisas, and Los Naranjos. Additionally, the British International School of Marbella is just four minutes away.

Please note, these are two side by side semi-detached homes, can be converted into a single detached villa (work undertaken by the seller) please watch both video tours:



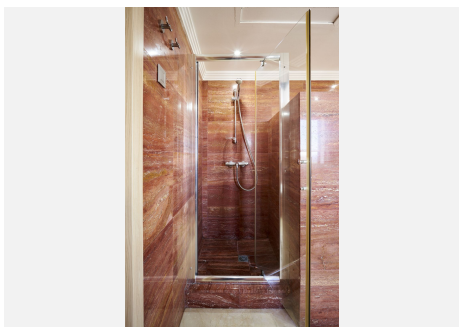
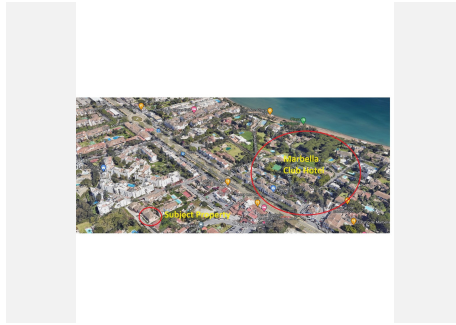
# BROMLEY ESTATES

*Marbella*



# BROMLEY ESTATES

*Marbella*



# BROMLEY ESTATES

*Marbella*



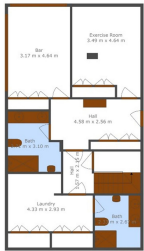
# BROMLEY ESTATES

*Marbella*

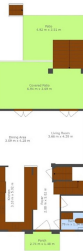


# BROMLEY ESTATES

*Marbella*



**TOTAL 209 m<sup>2</sup>**  
 Área Construida: 150 m<sup>2</sup> (150 m<sup>2</sup> x 1.00 m<sup>2</sup>)  
 Excluido: Área: 59 m<sup>2</sup> (59 m<sup>2</sup> x 1.00 m<sup>2</sup>)  
 Excluido: Área: 4 m<sup>2</sup> (4 m<sup>2</sup> x 1.00 m<sup>2</sup>)  
 Excluido: Área: 56 m<sup>2</sup> (56 m<sup>2</sup> x 1.00 m<sup>2</sup>)



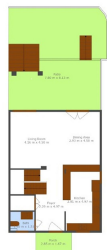
**TOTAL 189 m<sup>2</sup>**  
 Área Construida: 139 m<sup>2</sup> (139 m<sup>2</sup> x 1.00 m<sup>2</sup>)  
 Excluido: Área: 50 m<sup>2</sup> (50 m<sup>2</sup> x 1.00 m<sup>2</sup>)  
 Excluido: Área: 4 m<sup>2</sup> (4 m<sup>2</sup> x 1.00 m<sup>2</sup>)  
 Excluido: Área: 56 m<sup>2</sup> (56 m<sup>2</sup> x 1.00 m<sup>2</sup>)



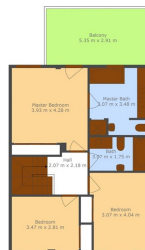
**TOTAL 209 m<sup>2</sup>**  
 Área Construida: 150 m<sup>2</sup> (150 m<sup>2</sup> x 1.00 m<sup>2</sup>)  
 Excluido: Área: 59 m<sup>2</sup> (59 m<sup>2</sup> x 1.00 m<sup>2</sup>)  
 Excluido: Área: 4 m<sup>2</sup> (4 m<sup>2</sup> x 1.00 m<sup>2</sup>)  
 Excluido: Área: 56 m<sup>2</sup> (56 m<sup>2</sup> x 1.00 m<sup>2</sup>)



**TOTAL 229 m<sup>2</sup>**  
 Área Construida: 170 m<sup>2</sup> (170 m<sup>2</sup> x 1.00 m<sup>2</sup>)  
 Excluido: Área: 59 m<sup>2</sup> (59 m<sup>2</sup> x 1.00 m<sup>2</sup>)  
 Excluido: Área: 4 m<sup>2</sup> (4 m<sup>2</sup> x 1.00 m<sup>2</sup>)  
 Excluido: Área: 56 m<sup>2</sup> (56 m<sup>2</sup> x 1.00 m<sup>2</sup>)



**TOTAL 227 m<sup>2</sup>**  
 Área Construida: 167 m<sup>2</sup> (167 m<sup>2</sup> x 1.00 m<sup>2</sup>)  
 Excluido: Área: 60 m<sup>2</sup> (60 m<sup>2</sup> x 1.00 m<sup>2</sup>)  
 Excluido: Área: 4 m<sup>2</sup> (4 m<sup>2</sup> x 1.00 m<sup>2</sup>)  
 Excluido: Área: 56 m<sup>2</sup> (56 m<sup>2</sup> x 1.00 m<sup>2</sup>)



**TOTAL 227 m<sup>2</sup>**  
 Área Construida: 167 m<sup>2</sup> (167 m<sup>2</sup> x 1.00 m<sup>2</sup>)  
 Excluido: Área: 60 m<sup>2</sup> (60 m<sup>2</sup> x 1.00 m<sup>2</sup>)  
 Excluido: Área: 4 m<sup>2</sup> (4 m<sup>2</sup> x 1.00 m<sup>2</sup>)  
 Excluido: Área: 56 m<sup>2</sup> (56 m<sup>2</sup> x 1.00 m<sup>2</sup>)