

# BROMLEY ESTATES

*Marbella*



## HOUSE 3 BEDROOMS 2 BATHROOMS IN BENAHAVIS

📍 Benahavis

REF# BEMR4786942 €1,095,000

BEDS

3

BATHS

2

BUILT

225 m<sup>2</sup>

PLOT

1093 m<sup>2</sup>

Welcome to this charming villa, where every day comfort meets tranquility in a prime location. This beautiful home offers the perfect blend of elegance, comfort, and convenience. This is a 3 bedroom house built on one level. The exterior features a spacious driveway that can accommodate up to six cars, providing ample parking for residents and guests alike. The gated plot enhances security and privacy, while the garage comfortably fits a small car. Additionally, there are two separate storage rooms, perfect for garden equipment and furniture. The plot is designed for maximum privacy, with no views from neighbors, ensuring your personal space remains undisturbed.

Step inside the house and you are greeted by a welcoming entrance hall that sets the tone for this cozy home. To the left of the entrance, you'll find a convenient guest toilet with a shower. Opposite the guest toilet, there's a comfortable guest bedroom, ideal for visitors. This side of the house also includes a spacious master bedroom with an en-suite bathroom featuring a shower. The heart of the home is the inviting living room and dining area, perfect for entertaining or relaxing with family. The well-appointed kitchen is conveniently located to the right of the living area, featuring all appliances and ample storage.

+34 952 939 460 · [info@bromleyestatesmarbella.com](mailto:info@bromleyestatesmarbella.com) Urbanizacion El Rosario, CN340, Km 188, Marbella, Malaga 29603



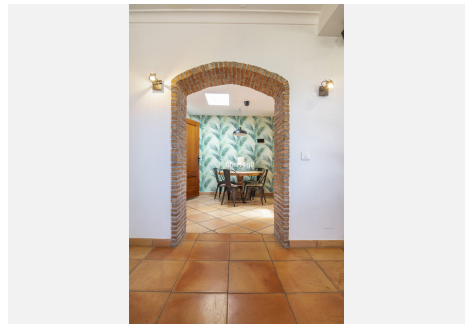
# BROMLEY ESTATES

*Marbella*

This side of the house also includes the third bedroom, offering additional accommodation options. The living area features a stylish glass fireplace, adding warmth and elegance to the space. From the living room you have access to a big terrace with a lounge area and dining. The lush garden, adorned with lemon and orange trees, creates a serene and fragrant outdoor space. From the terrace, you can bask in the breathtaking views of La Concha and San Pedro, with a hint of sea view adding to the allure.

This family house is located in Fuente del Espanto, a picturesque urbanization in Benahavís, near San Pedro de Alcántara. This is an unrivalled opportunity to live in a tranquil setting, while still being accessible and close to all the amenities of San Pedro, Nueva Andalucía and Puerto Banús. Conveniently located with easy access to the toll road, commuting is a easy from this location.

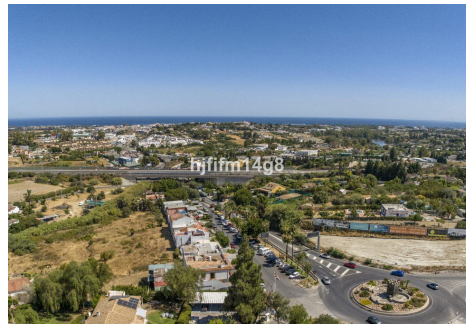
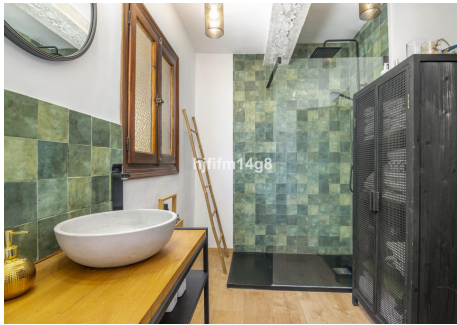
This villa is not just a house; it's a lifestyle. With its stunning views, ultimate privacy, and luxurious amenities, it's the perfect place to call home.





# BROMLEY ESTATES

*Marbella*



# BROMLEY ESTATES

*Marbella*

