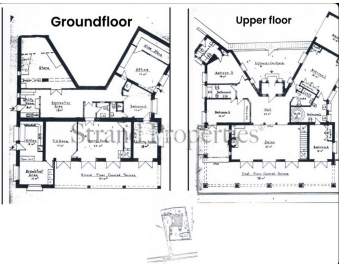


BROMLEY ESTATES

Marbella



HOUSE 4 BEDROOMS 4 BATHROOMS IN MARBELLA

📍 Marbella

REF# BEMR4787692 €1,450,000

BEDS

4

BATHS

4

BUILT

600 m²

PLOT

2581 m²

Discover this stunning villa in need of renovation set on a 2581 m² plot, complete with a 200 m² private drive and two elegant electric gates. This charming property, built approximately 60 years ago, showcases the authentic Andalusian style with its covered terraces and traditional details.

The villa features 4 spacious bedrooms, 4 full bathrooms, a guest toilet, a large 75 m² living room, a separate dining room, and potential for a separate apartment on two floors.

Prime location just a 5-minute walk from Marbella's main bus station, with direct connections to Malaga airport, Gibraltar airport, all regions of Spain, as well as Portugal and Europe. 10 minutes drive to the main Marbella Hospital. 5 minutes drive to La Cañada shopping center and Al Campo Supermarket. 1 minute drive to the new Mercadona supermarket or a 5-minute walk, and Xarblanca park with free entry and children's playground. 2 minutes drive to the A7 motorway, connecting to Gibraltar, Malaga, Madrid, and Barcelona. 15 minutes walk to Marbella's charming old town and the Leganitos Health Centre. 15 minutes walk to the beautiful Marbella beach.

+34 952 939 460 · info@bromleyestatesmarbella.com Urbanizacion El Rosario, CN340, Km 188, Marbella, Malaga 29603

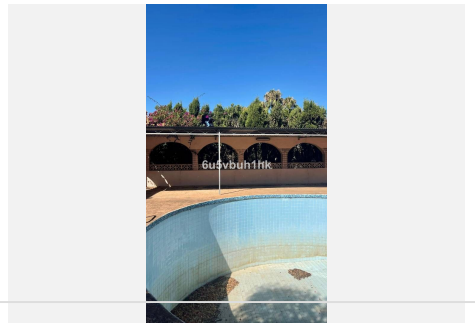
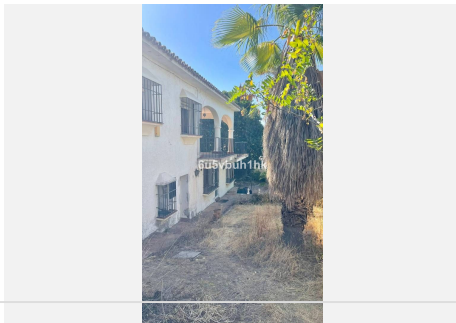
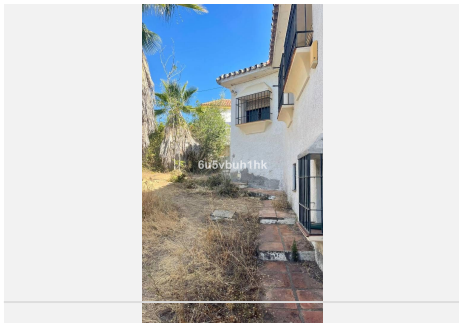
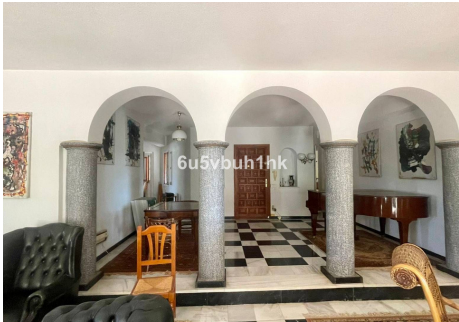
BROMLEY ESTATES

Marbella

Located in the exclusive La Cantera urbanization, this villa offers a safe and quiet residential environment, with a wide range of nearby services including children's areas, cafes, supermarkets, leisure areas, restaurants, nature, sports centers, and golf courses.

Enjoy unobstructed views and the convenience of being just a 10-minute drive from the beach, La Cañada, and Marbella Center.

Don't miss this unique investment opportunity in one of Marbella's most prestigious areas!



BROMLEY ESTATES

Marbella

