



PENTHOUSE DUPLEX 3 BEDROOMS 2.5 BATHROOMS IN ELVIRIA

📍 Elviria

REF# BEMR4791832 €1,295,000

BEDS

3

BATHS

2.5

BUILT

156 m²

TERRACE

114 m²

Three-bedroom duplex penthouse for sale in White Pearl Beach II, Elviria

We are very pleased to present this lovely 3-bedroom, 2,5-bathroom corner penthouse duplex in the long established frontline beach complex of White Pearl Beach II, in Elviria

This duplex penthouse enjoys wonderful sea and garden views, is very bright as it has large windows all over so the light and the sun boast in and brightens the lovely apartment.

Upon entering the property, we are welcomed by a large entrance hall. On the right-hand side, we find the kitchen which is independent, very ample, fitted with high quality appliances and also benefits from a utility room, on the same floor there is also a guest toilet, several fitted wardrobes, onto the left-hand side there is a spacious living room with access to the terrace and the master bedroom with en suite bathroom, it is also connected to the front terrace which is both covered and uncovered.

Upstairs there are other two generously sized bedrooms, which share a bathroom that is in the middle of them with independent access from both bedrooms. There is a large open terrace to enjoy the sea views

BROMLEY ESTATES

Marbella

and part of the terrace has been included in one of the bedrooms.

The apartment includes an underground parking space and storage room

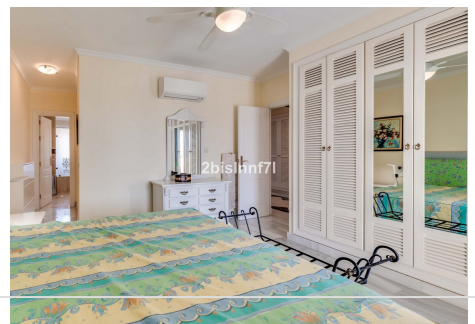
Elviria sandy beaches is mostly frequented by families, you have Perla Blanca restaurant and other traditional restaurants and famous beach clubs as Nikki Beach Club

850m away (12-minute walk) you have Elviria shopping area, grocery shops, pharmacy, hairdressers, bars and restaurants. Within a 7 minutes' drive (5km) you reach the hidden pearl of Costa del Sol, Puerto de Cabopino. It's a small but enchanting harbour with cute port, and small boatyard, attractive architecture and a large choice of restaurants.

There are several 18-hole golf courses like Santa Maria Golf, Santa Clara Golf, Greenlife Golf.

Marbella city centre is only 12 minutes' drive away, Puerto Banus and Fuengirola are 15 min away and the Airport is 40 min drive from the apartment. Ideal as permanent or holiday residence.

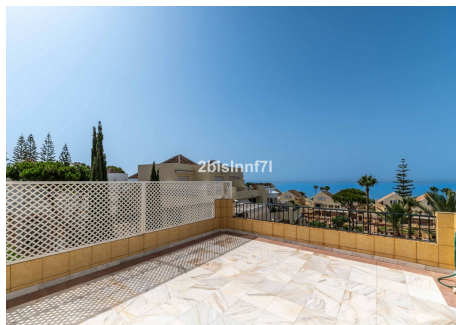
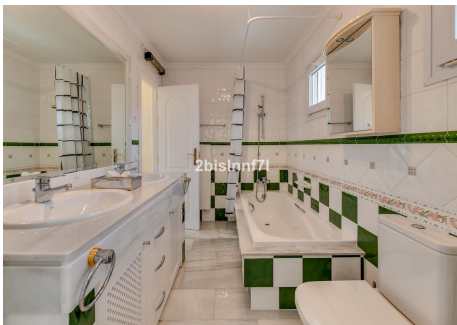
This beautiful duplex penthouse with fantastic sea views is located in one of the most sought-after beachfront properties in Elviria, Marbella and you shouldn't miss this ideal choice either as permanent or holiday residence.



+34 952 939 460 · info@bromleyestatesmarbella.com Urbanizacion El Rosario, CN340, Km 188, Marbella, Malaga 29603

BROMLEY ESTATES

Marbella



BROMLEY ESTATES

Marbella

