

BROMLEY ESTATES

Marbella



MIDDLE FLOOR APARTMENT 2 BEDROOMS 2 BATHROOMS IN ELVIRIA

📍 Elviria

REF# BEMR4792600 €395,000

BEDS

2

BATHS

2

BUILT

67 m²

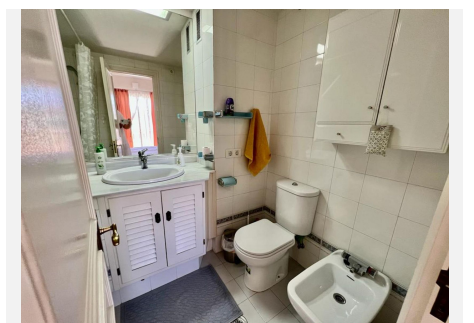
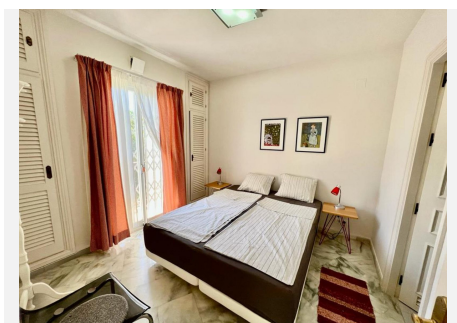
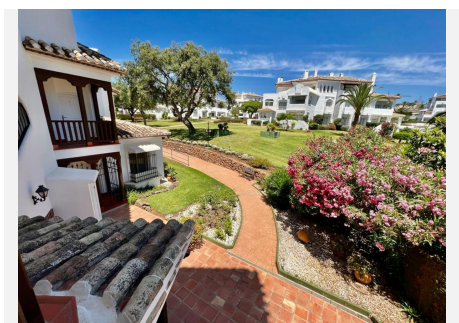
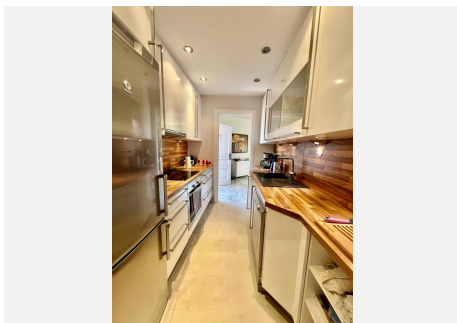
TERRACE

16 m²

WONDERFUL SOUTH EAST FACING APARTMENT ON MIDDLE FLOOR IN THE BEST COMPLEX IN THE CENTRE OF ELVIRIA. SHORT DISTANCE TO ALL AMENITIES, TO SHOPS AND RESTAURANTS AND 10 MINUTE WALK TO THE BEACH. EASY ACCESS TO THE MAIN ROAD. IT CONSISTS OF TWO BEDROOMS, TWO BATHROOMS AND A LARGE UTILITY ROOM. NICE RENOVATED KITCHEN. COSY TERRACE WITH LOTS OF SUN, VERY PLEASANT AND WITH POSSIBILITY TO CLOSE WITH A PERGOLA ROOF AND GLASS CURTAINS TO TAKE ADVANTAGE OF IT DURING THE WINTER TIME. THE BLOCK HAS A LIFT. VERY WELL KEPT SPACIOUS GARDENS, THREE SWIMMING-POOLS (ONE HEATED), LIFEGUARD IN HIGH SEASON, TWO TENNIS COURTS AND CLUB/RESTAURANT. SECURITY CAMERAS IN THE COMPLEX. BARBECUE AREA AND PETANQUE.

BROMLEY ESTATES

Marbella



BROMLEY ESTATES

Marbella

